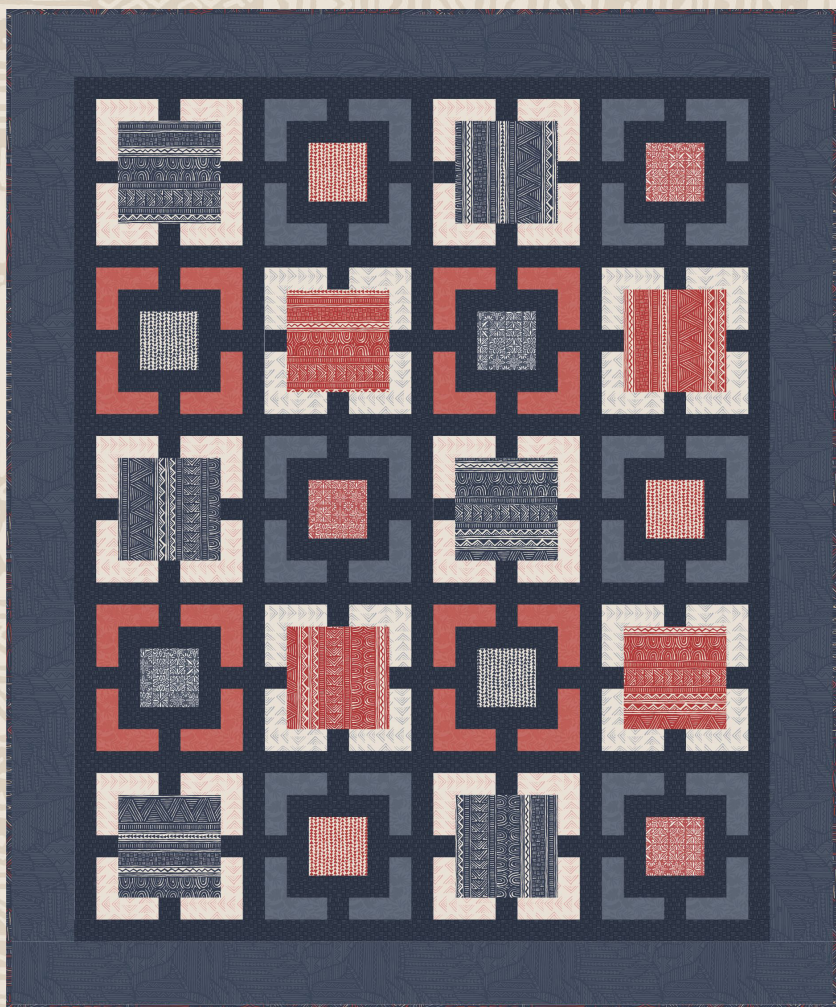


MAYWOOD  STUDIO

BREEZEWAY QUILT



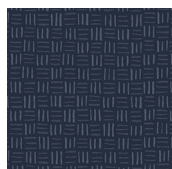
Breezeway Quilt by Maywood Studio

Featuring the Breezeway collection from Maywood Studio.

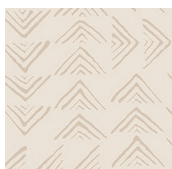
57" x 68½"

maywoodstudio.com

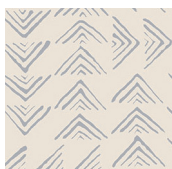
BREEZE WAY



Fabric 1
10398-B



Fabric 2
10396-E



Fabric 3
D10396-EB



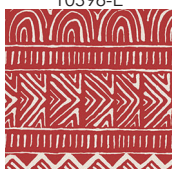
Fabric 4
D10395-B3



Fabric 5
D10395-R3



Fabric 6
10392-B2



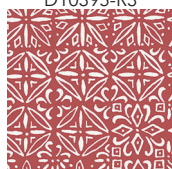
Fabric 7
10392-R2



Fabric 8
10397-R2



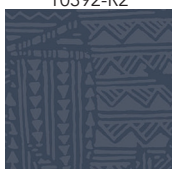
Fabric 9
10397-B2



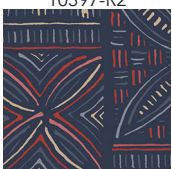
Fabric 10
10393-R2



Fabric 11
10393-B2

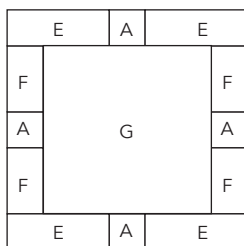


Fabric 12 - Borders
10391-R2

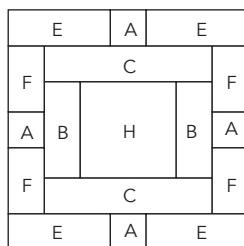


Fabric 13 - Binding
10390-BZ

Block 1



Block 2



Blocks unfinished:
10-1/2" x 10-1/2"

MAYWOOD  STUDIO

Maywood Studio makes every effort to make sure our patterns are accurate.
Check for updates at maywoodstudio.com/projects

Fabric Requirements		
Fabric 1	10398-B	1-1/2 yards
Fabric 2	10396-E	1/3 yard
Fabric 3	D10396-EB	1/4 yard
Fabric 4	D10395-B3	1/3 yard
Fabric 5	D10395-R3	1/4 yard
Fabric 6	10392-B2	1/2 yard
Fabric 7	10392-R2	1/4 yard
Fabric 8	10397-R2	F8th
Fabric 9	10397-B2	F8th
Fabric 10	10393-R2	F8th
Fabric 11	10393-B2	F8th
Fabric 12	10391-R2	1 yard
Fabric 13	10390-BZ	1/2 yard
Backing		3-3/4 yards

A note about this pattern:

The Fabric 6 and Fabric 7 striped squares will all look different when they are cut. Have fun and play with the rotation for these in your quilt layout. The different placements of the stripes in these squares give the quilt an improvisational feel!

WOF - Width of Fabric
 LOF - Length of Fabric
 RST - Right Sides Together
 HST - Half Square Triangle

Cutting

Fabric 1 - Navy Geo

Cut (26) 2" x WOF strips.

From 19 strips subcut:

A - (80) 2" x 2" squares - 4 strips

B - (20) 2" x 4-1/2" rectangles - 3 strips

C - (20) 2" x 7-1/2" rectangles - 4 strips

D - (15) 2" x 10-1/2" rectangles - 4 strips

Sashing

Sew together (5) strips. Subcut into:

(4) 2" x 45" strips

Inner Borders - Sides

Sew together 3 strips. Subcut into:

(2) 2" x 56-1/2" inner side borders

Inner Borders - Top and Bottom

Sew together 3 strips. Subcut into:

(2) 2" x 48" inner top and bottom borders

Fabric 2 and Fabric 4

Cut (5) 2" x WOF strips. Subcut into:

E - (24) 2" x 4-3/4" rectangles - 3 strips

F - (24) 2" x 3-1/4" rectangles - 2 strips

Fabric 3 and Fabric 5

Cut (4) 2" x WOF strips. Subcut into:

E - (16) 2" x 4-3/4" rectangles - 2 strips

F - (16) 2" x 3-1/4" rectangles - 2 strips

Fabric 6

G - (6) 7-1/2" x 7-1/2" squares

Fabric 7

G - (4) 7-1/2" x 7-1/2" squares

Fabrics 8 and 10

H - (3) 4-1/2" x 4-1/2" squares

Fabrics 9 and 11

H - (2) 4-1/2" x 4-1/2" squares

Fabric 12 - Outer Borders

Cut (6) 5" x WOF strips. Sew together and subcut into:

(2) 5" x 59-1/2" side borders

(2) 5" x 57" top and bottom borders

Fabric 13 - Binding

(7) 2-1/4" x WOF strips

Breezeway Quilt Instructions

Please read all instructions before you begin. Seam allowance is 1/4. Fabric is abbreviated as 'F' - for example, F1 refers to Fabric 1. Press in the direction of arrows.

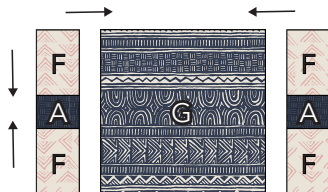
Block 1 - Blue Center

1. Sew an F2-F rectangle to either side of an F1-A square. Press toward A. Make 12.

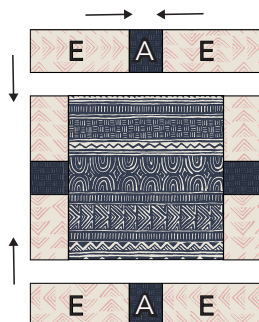
2. Sew an F/A/F unit to either side of a F6-G square. Press toward G.

3. Sew an F2-E rectangle to either side of an F1-A square. Press toward A. Make 12.

4. Sew the E/A/E section to the top and bottom of the step 3 unit. Press toward G. Repeat to make 6 blocks.



Block 1 - Steps 1 - 2



Block 1 - Steps 3-4



Block 1
Make 6

Block 2 - Red Center

1. Sew an F3-F rectangle to either side of an F1-A square. Press toward A. Make 8.

2. Sew an F/A/F section to either side of a F7-G square. Press toward G.

3. Sew an F3-E rectangle to either side of an F1-A square. Press toward A. Make 8.

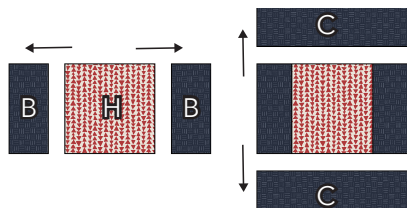
4. Sew the E/A/E section to the top and bottom of the step 3 unit. Press toward G. Repeat to make 4 blocks.



Block 2
Make 4

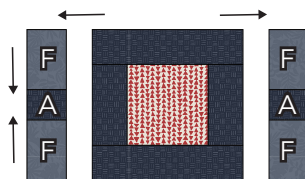
Blocks 3 & 4 - Red Centers

1. Sew an F1-B rectangle to either side of an F8-H square. Press. Then sew the F1-C rectangles to the top and bottom of that square. Press. Make 3.



Block 3 - Step 1

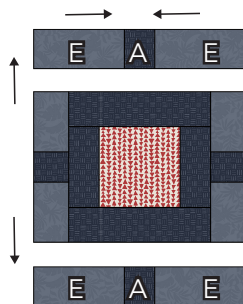
3. Sew an F/A/F section to either side of the step 1 unit. Press.



Block 3 - Steps 2-3

4. Sew an F4--E rectangle to either side of an F1-A square. Press toward A. Make 12.

5. Make 8. Sew the E/A/E sections to the top and bottom of the block. Press. Make 3.



Block 3 - Steps 4-5

5. Repeat steps 1-5 using the F10-H squares. Make 3.

Blocks 5 & 6 - Blue Centers

1. Sew an F1-B rectangle to either side of an F9-H square. Press. Then sew the F1-C rectangles to the top and bottom of that square. Press. Make 2.

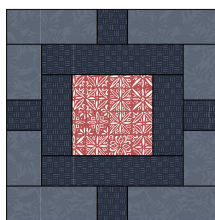
2 Sew an F5-F rectangle to either side of an F1-A square. Press. Make 8.

3. Sew and F/A/F section to either side of the step 2 unit.

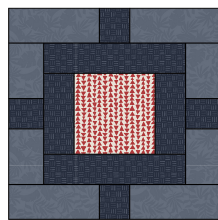
4. Sew an F5--E rectangle to either side of an F1-A square. Press. Make 8.

5. Sew and E/A/E section to the top and bottom of the block. Press. Make 2.

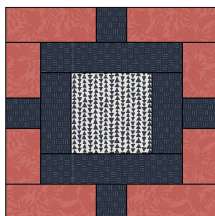
6. Repeat steps 1-5 using the F11-H squares. Make 2.



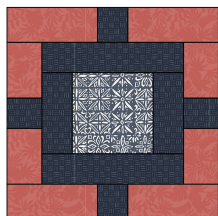
Block 4 - Make 3



Block 3 - Make 3



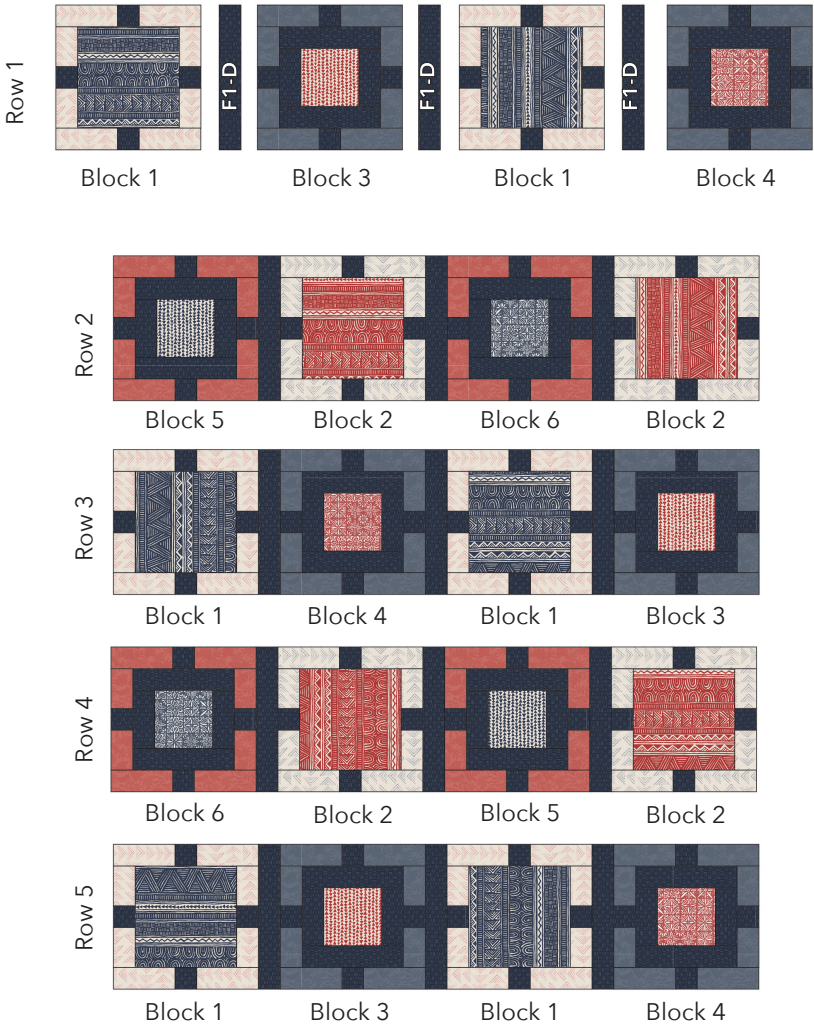
Block 5 - Make 2



Block 6 - Make 2

Rows

- 1. Sew the F1-D rectangles between the blocks to form the rows. Press to nest.
- 2. Follow the illustrations below for the layout for each row.

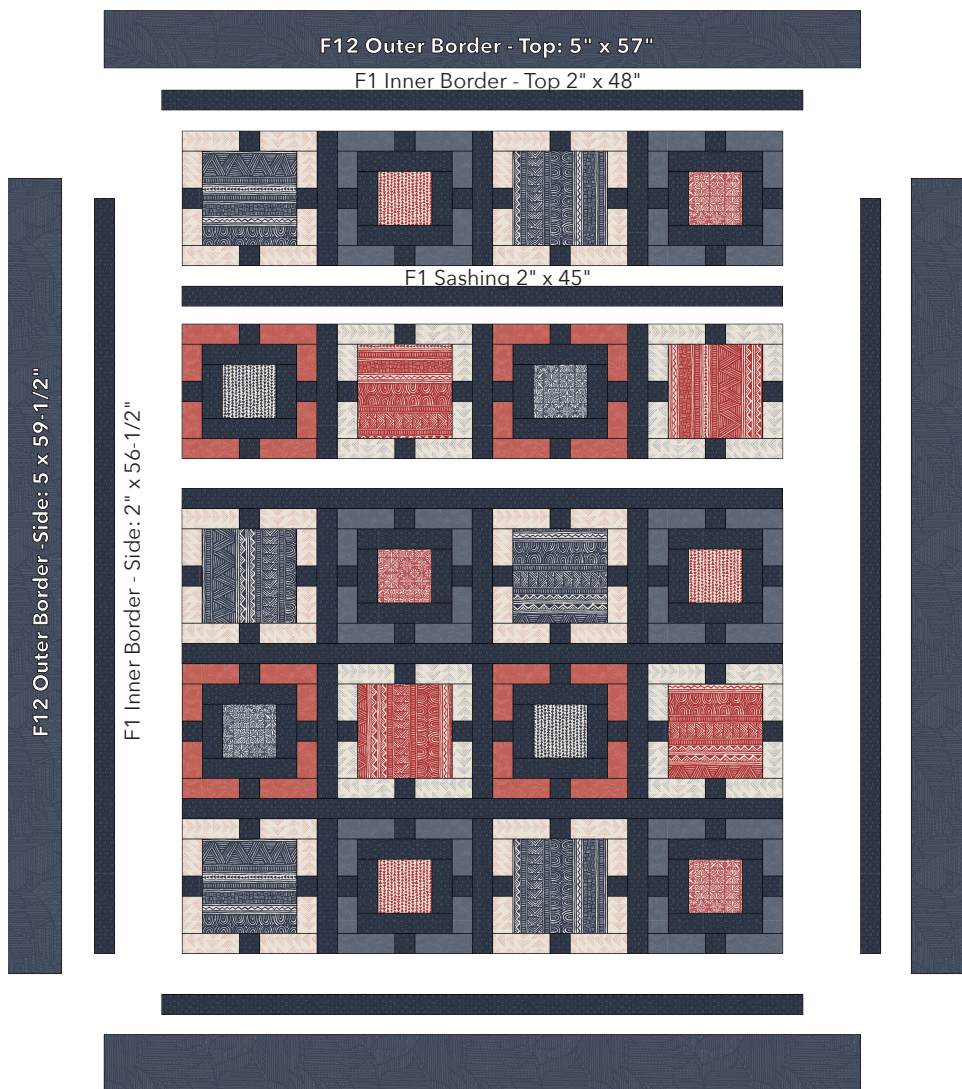


Borders

Illustrations on p.7

- 3. Sew the F1 inside borders to the sides of the quilt top. Press. Sew the F1 inside borders to the top and bottom of the quilt top. Press.
- 4. Sew the F12 outside borders to the sides of the quilt top. Press. Sew the F12 outside borders to the top and bottom of the quilt top.

Tip: Pin the borders to the quilt top starting at the center and pinning out to the edge for each round. This will help to make sure you don't stretch the borders as you sew.

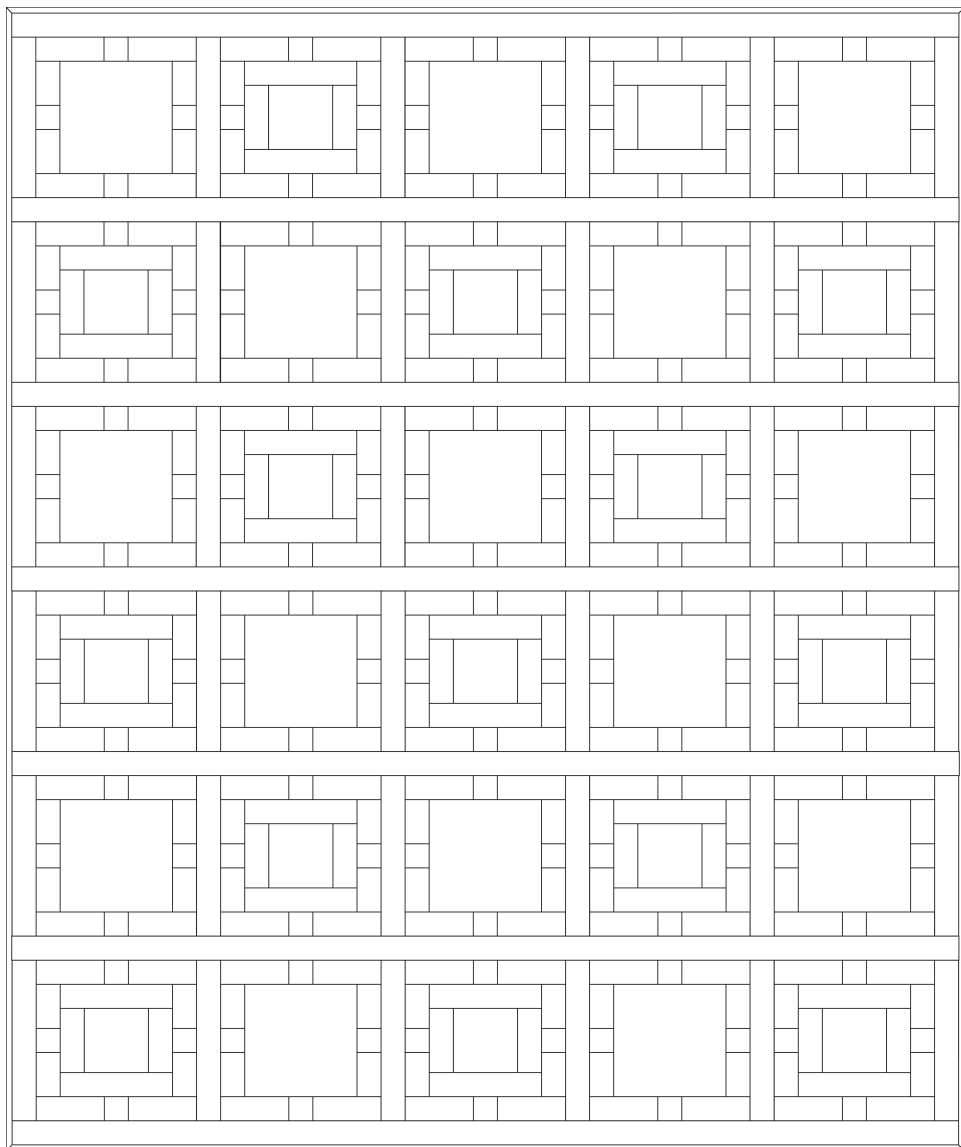


Finishing

1. Layer the backing (wrong side up), batting and quilt top (right side up). Baste layers to secure. Quilt as desired. Trim the excess backing and batting.
2. Sew the binding strips together into one continuous strip. Press in half length-wise. Sew the binding to the quilt top with a 1/4" seam allowance. Turn the binding to the back side of the quilt and stitch down by hand with matching thread.

Quilt Planning Diagram

Use this diagram to plan your quilt top.



Find more projects and inspiration at maywoodstudio.com

