

MAYWOOD  STUDIO

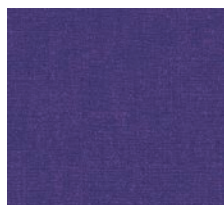
first light QUILT



First Light Quilt by Maywood Studio
featuring the Hand Picked: First Light Collection by Nicholas Lapp
60" x 72"

#madewithmaywood
maywoodstudio.com

• HAND PICKED •
first light
 • BY NICHOLAS LAPP •



Fabric 1
D10150-VY



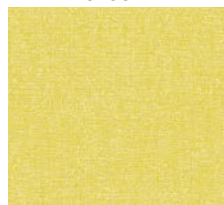
Fabric 2
D10150-V



Fabric 3
D10150-P



Fabric 4
D10150-C



Fabric 5
D10150-S



Fabric 6
D10150-G



Fabric 7
D10151-SV



Fabric 8
D10155-VY



Fabric 9
D10159-VP



Fabric 10
D10156-P



Fabric 11
D10158-C



Fabric 12
D10154-GV



Fabric 13
D10152-G

MAYWOOD  STUDIO

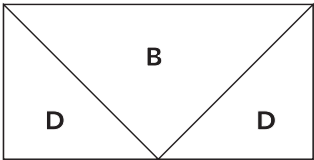
Maywood Studio makes every effort to make sure our patterns are accurate.
 Check for updates at maywoodstudio.com/projects

Fabric Requirements		
Fabric 1	D10150-VY	5/8 yard
Fabric 2	D10150-V	5/8 yard
Fabric 3	D10150-P	3/4 yard
Fabric 4	D10150-C	3/4 yard
Fabric 5	D10150-S	5/8 yard
Fabric 6	D10150-G	5/8 yard
Fabric 7	D10151-SV	1/4 yard
Fabric 8 *includes binding	D10155-VY	1 yard
Fabric 9	D10159-VP	5/8 yard
Fabric 10	D10156-P	3/4 yard
Fabric 11	D10158-C	5/8 yard
Fabric 12	D10154-GV	1/2 yard
Fabric 13	D10152-G	1/4 yard
Backing	108" wide back	2 yards
	44/45" wide	4 yards

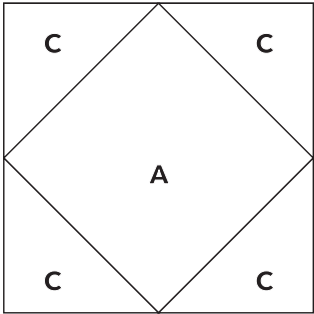
WOF - Width of Fabric
 LOF - Length of Fabric
 RST - Right Sides Together
 HST - Half Square Triangle

Cutting
<p>Fabrics 1, 2, 5, 6 From each cut (2) 9" x WOF strips. Subcut into: A: (5) 9" squares</p> <p>Fabrics 3, 4 From each cut (2) 12-1/2" x WOF strips: Subcut into B: (10) 6-1/2" x 12-1/2" rectangles</p> <p>Fabric 7, 13 From each cut (1) 7" x WOF strip. Subcut into: C: (5) 7" squares.</p> <p>See p. 5 for cutting squares on the diagonal</p> <p>Fabric 8, 12 From each cut (2) 7" x WOF strips. Subcut into C: (10) 7" squares. Cut 1x on the diagonal</p> <p>Fabric 8 Binding Cut (7) strips 2-1/4" x WOF</p> <p>Fabrics 9, 11 From each cut (1) 7" x WOF strip. Subcut into: C: (5) 7" squares. Cut 1x on the diagonal From each cut (2) 6-1/2" x WOF strip. Subcut into: D: (10) 6-1/2" squares</p> <p>Fabric 10 From each cut (4) 6-1/2" x WOF strip. Subcut into: D: (20) 6-1/2" squares</p>

The First Light Quilt is made with Flying Geese units and Square in a Square Blocks



6-1/2" x 12-1/2" unfinished
 6" x 12" finished



12-1/2" x 12-1/2" unfinished
 12" x 12" finished

First Light Quilt Instructions

Please read all instructions before you begin. Seam allowance is 1/4" unless otherwise stated. Fabric is abbreviated as 'F'. For example, F1 refers to Fabric 1. Press in the direction of arrows.

Use a light sizing or starch on pieces to help prevent stretching along the diagonal edges.

Use the ☐ check boxes to mark each step as you complete it.

Flying Geese Units

Gather (10) F3-B and F4-B rectangles, (10) each of F9 & F11 -D squares, and (20) F10-D squares.

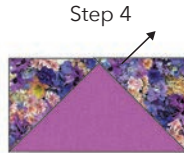
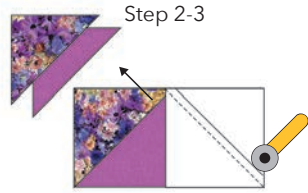
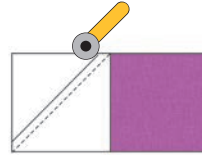
☐ 1. Mark a diagonal line from corner to corner on the wrong side of the F9-D squares.

☐ 2. Place the D square, RST over a F3-B rectangle. Sew on the marked line.

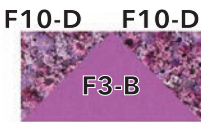
☐ 3. Cut 1/4" away from the sewn line. Press towards F9.

☐ 4. Repeat steps 2-3 on the opposite corner. Trim to finish at 6-1/2" x 12-1/2". Make 5.

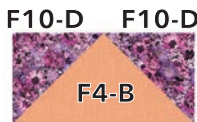
☐ 5. Make a total of 5 flying geese units in each combination shown below.



Make 5



Make 5



Make 5



Make 5

Square in a Square blocks

Gather (5) F1, 2, 5, 6-A squares, (5) F-7,9, 11, 13-C squares, (10) F8, 12-C squares.

- ❑ 1. Cut the F7-C and F8-C squares once on the diagonal.

TIP: For the next steps, mark the centers of the A squares to line up the center of each C triangle.

- ❑ 2. Sew a F7-C triangle to the top and of each F1-A square. Press away from center.

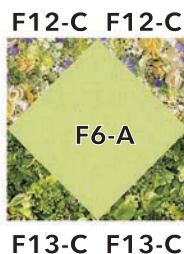
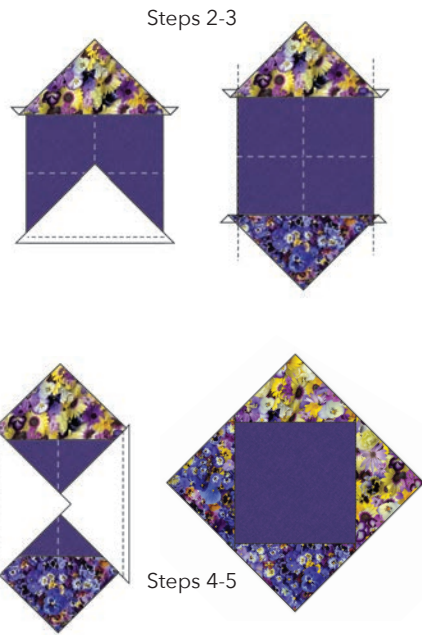
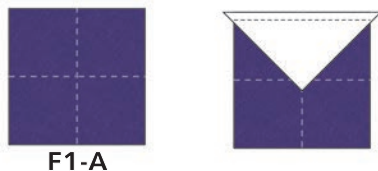
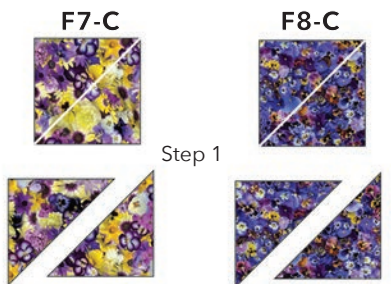
- ❑ 3. Sew a F8-C triangle to the bottom of each step 2 unit. Press away from center. Trim the overhang even with the edge of the center square.

- ❑ 4. Sew a F7-C triangle to the right side and of each step 3 unit. Press away from center.

- ❑ 5. Sew a F8-C triangle to the left side of each step 5 unit. Press away from center.

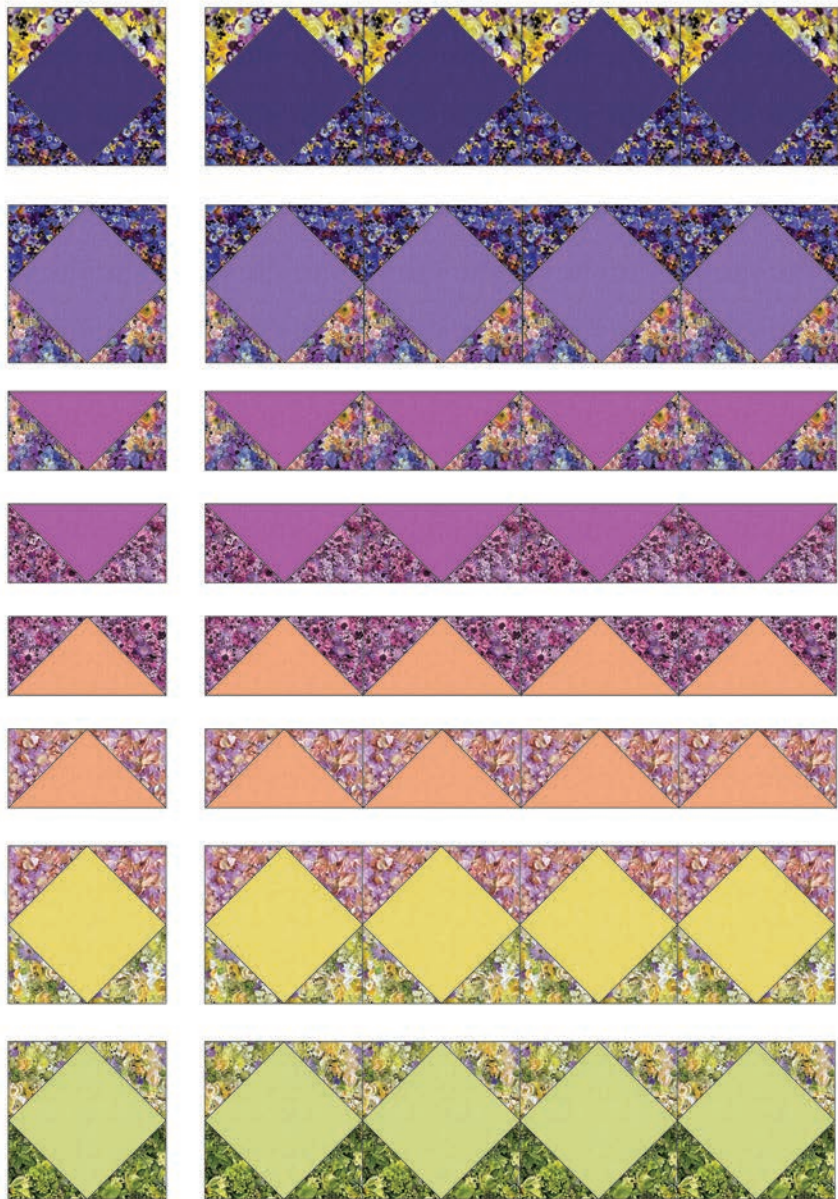
- ❑ 6. Trim to 12-1/2"square. Make sure there is a 1/4" seam allowance around the center square at the corners. Make 5.

- ❑ 7. Make a total of 5 blocks in each combination shown below.



Quilt Top and Finishing

- ❑ 1. Sew the blocks together into rows. Press to nest.
- ❑ 2. Sew row to row. Press in one direction.

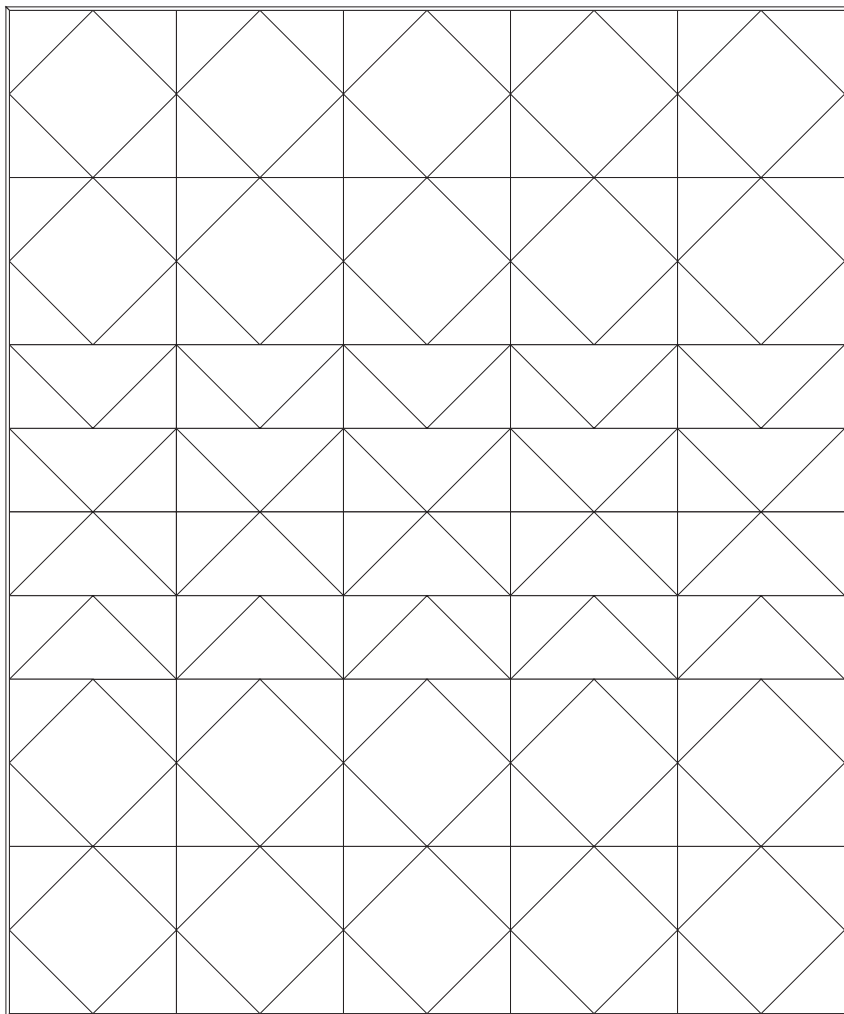


- ❑ 3. Layer the backing (wrong side up), batting and quilt top (right side up). Baste layers to secure. Quilt as desired. Trim the excess backing and batting.



- ❑ 4. Sew the binding strips together into one continuous strip. Press in half length-wise. Sew the binding to the quilt top with a 1/4" seam allowance. Turn the binding to the back side of the quilt and stitch down by hand with matching thread.

First Light Quilt Planning Diagram & Fabric Tags



F1-A (5) 9" squares	F5-A (5) 9" squares	F9-C (5) 7" squares	F11-D (10) 6-1/2" squares
F2-A (5) 9" squares	F6-A (5) 9" squares	F9-D (10) 6-1/2" squares	F12-C (10) 7" squares
F3-B (10) 6-1/2" x 12-1/2"	F7-C (5) 7" squares	F10-D (20) 6-1/2" squares	F13-C (5) 7" squares
F4-B (10) 6-1/2" x 12-1/2"	F8-C (10) 7" squares	F11-C (5) 7" squares	F8 Binding (7) 2-1/4" x WOF strips

Find more projects and inspiration at maywoodstudio.com/projects