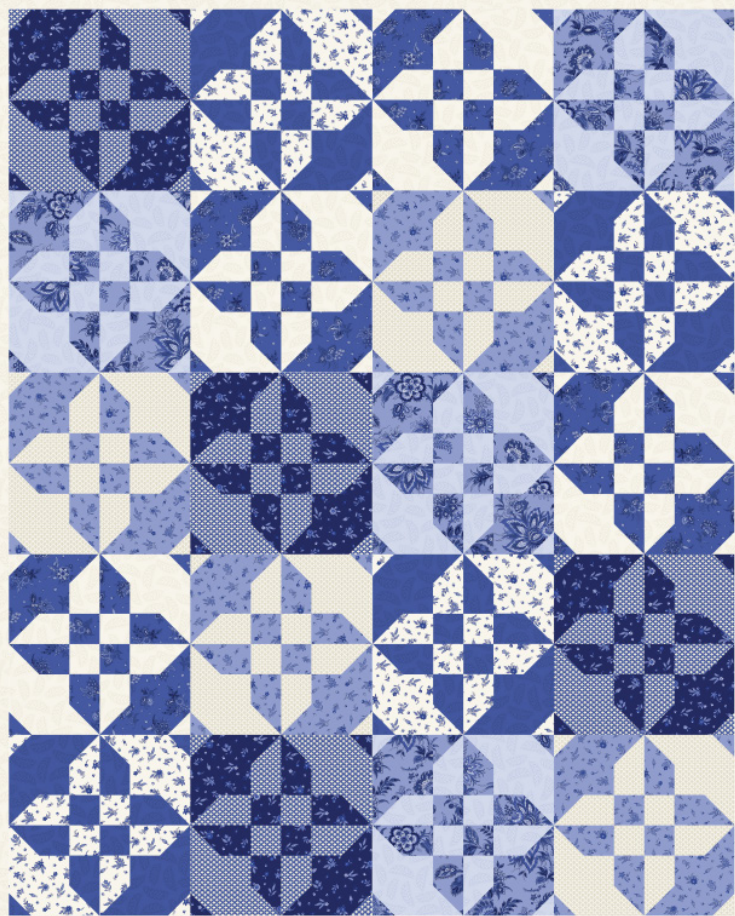


MAYWOOD  STUDIO

FRENCH QUARTER QUILT



French Quarter Quilt

Featuring the French Quarter collection from Maywood Studio

54" x 66"

maywoodstudio.com

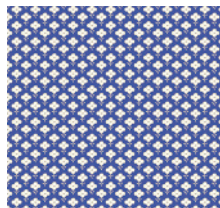
FRENCH QUARTER



Fabric 1
10604-B2



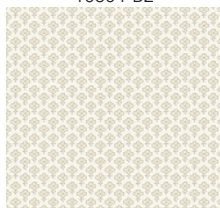
Fabric 2
10600-B2



Fabric 3
10605-BE



Fabric 4
10603-B



Fabric 5
10605-E



Fabric 6
10603-B2



Fabric 7
10604-E



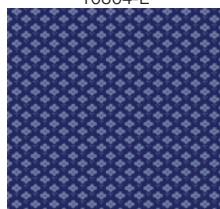
Fabric 8
10602-B



Fabric 9
10604-B



Fabric 10
10603-E



Fabric 11
10605-B

MAYWOOD  STUDIO

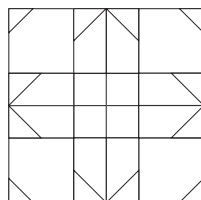
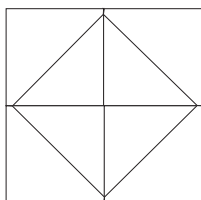
Maywood Studio makes every effort to make sure our patterns are accurate.
Check for updates at maywoodstudio.com/projects

Fabric Requirements		
Fabric 1	10604-B2	1/2 yard
Fabric 2	10600-B2	1/2 yard
Fabric 3	10605-BE	1/2 yard
Fabric 4	10603-B	1/2 yard
Fabric 5	10605-E	1/2 yard
Fabric 6	10603-B2	1/2 yard
Fabric 7	10604-E	1-1/8 yard
Fabric 8	10602-B	1/2 yard
Fabric 9	10604-B	1/2 yard
Fabric 10	10603-E	1/2 yard
Fabric 11	10605-B	1/2 yard
Backing	4 yards	

Cutting
54" x 66"
Fabric 1, 2, 3, 4, 5, 6, 7, 8, 9, 10 Cut (2) 7-1/2" x WOF strips into (8) 7-1/2" x 7-1/2" squares
Fabric 7 Borders Cut (6) 3-1/2" x WOF strips. Sew together, end to end and cut into: (2) 3-1/2" x 60-1/2" side borders (2) 3-1/2" x 54-1/2" top and bottom borders
Fabric 11 Binding Cut (6) 2-1/4" x WOF strips. Sew together, end to end.

Make Disappearing Hourglass Blocks from HSTs

Turn this → into this!



Sew, slice, and rearrange
to create this fun quilt block.

WOF - Width of Fabric
LOF - Length of Fabric
RST - Right Sides Together
HST - Half Square Triangle

French Quarter Quilt Instructions

Please read all instructions before you begin. Seam allowance is $\frac{1}{4}$ ". Fabric is abbreviated as 'F' - for example, F1 refers to Fabric 1.

Sew!

1. Mark a diagonal line from corner to corner on the wrong side of the F1 squares.

2. Place an F1 square, RST (right sides together) over an F2 square. Sew $\frac{1}{4}$ " away from either side of the marked line.

3. Cut apart on the marked line. Square up each unit to $7" \times 7"$. Make 8 for a total of 16 HST units.

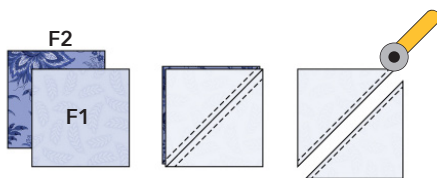
4. Arrange the HST units as shown to the right.

5. Sew together into pairs, and then sew the pairs together. Press. Make 4.

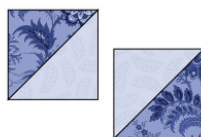
Slice!

6. Mark nine equal $4\frac{1}{2}"$ sections horizontally and vertically on the step 5 units.

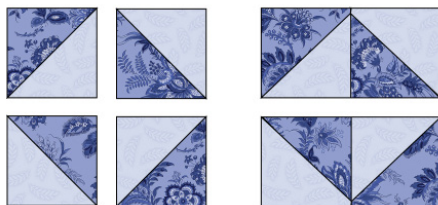
7. Cut into (9) $4\frac{1}{2}" \times 4\frac{1}{2}"$ squares. These will become the new units for your disappearing hourglass blocks.



Steps 1-2



Make 16
 $7" \times 7"$

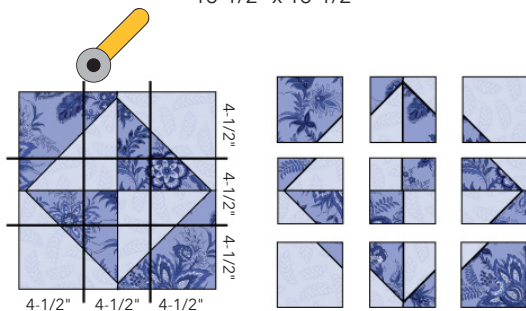


Step 4

Step 5



Make 4
 $13\frac{1}{2}" \times 13\frac{1}{2}"$



Steps 6-7

Rearrange!

8. Rotate the corner units so the small triangle faces away from center.

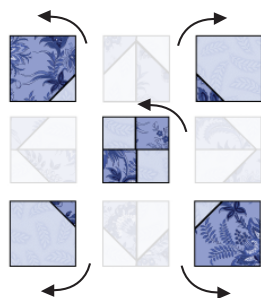
9. Rotate the center unit so the dark square is in the upper left corner.

10. Sew the rotated units into 3 rows.

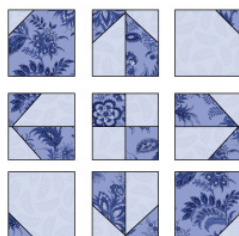
11. Sew row to row. Press. Make 4.

The new block is now 12-1/2" x 12-1/2"

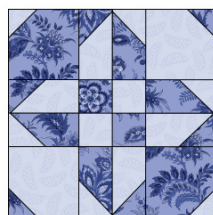
Repeat steps 1-10 to make Blocks B, C, D, and E as shown below.



Step 8-9

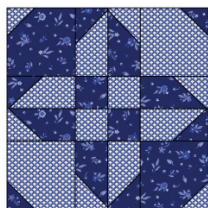


Step 10

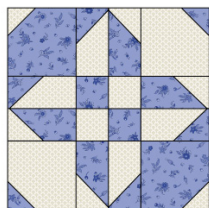


Block A - Make 4
12-1/2" x 12-1/2"

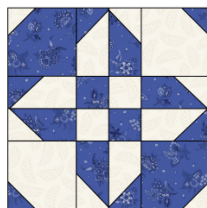
Blocks B, C, D, E



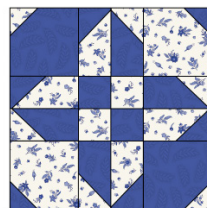
Block B - Make 4



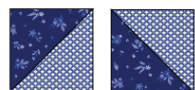
Block C - Make 4



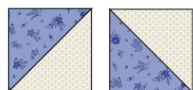
Block D - Make 4



Block E - Make 4



Fabrics 3 and 4



Fabrics 5 and 6



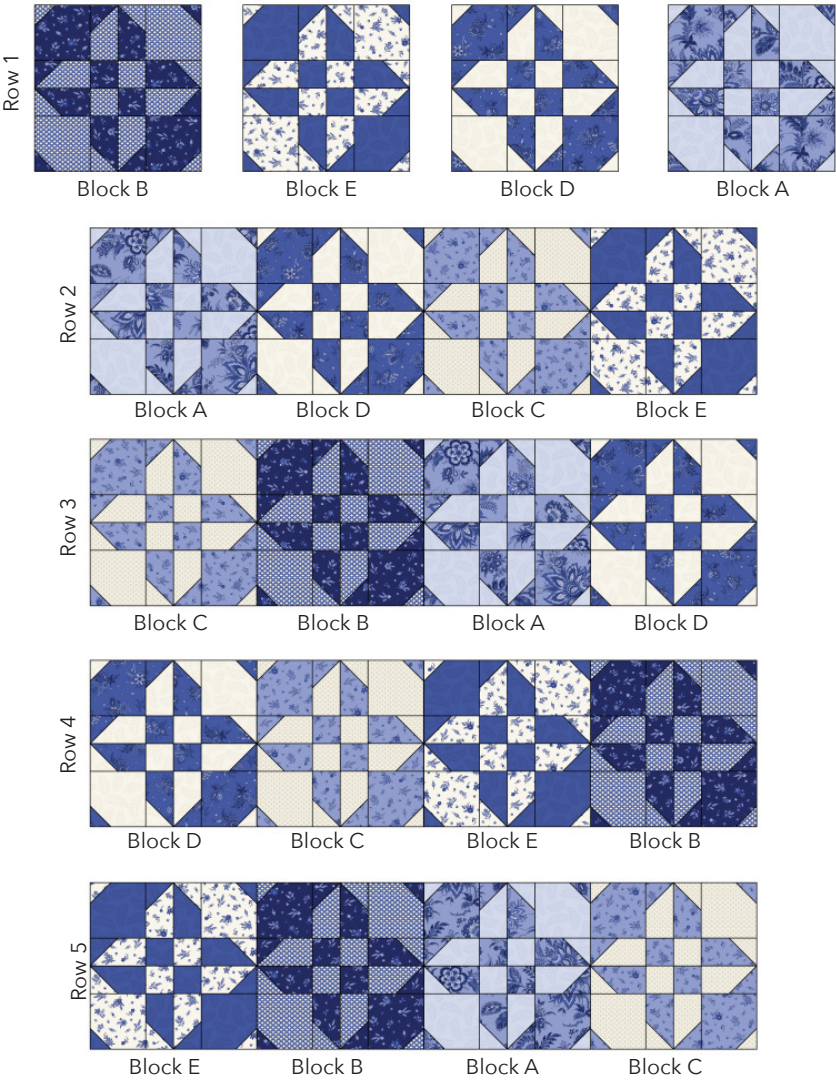
Fabrics 7 and 8



Fabrics 9 and 10

Row Assembly

- 1. Lay out the quilt blocks as shown below.
- 2. Sew blocks into rows. Press in one direction to nest seams.
- 3. Sew rows together. Press.

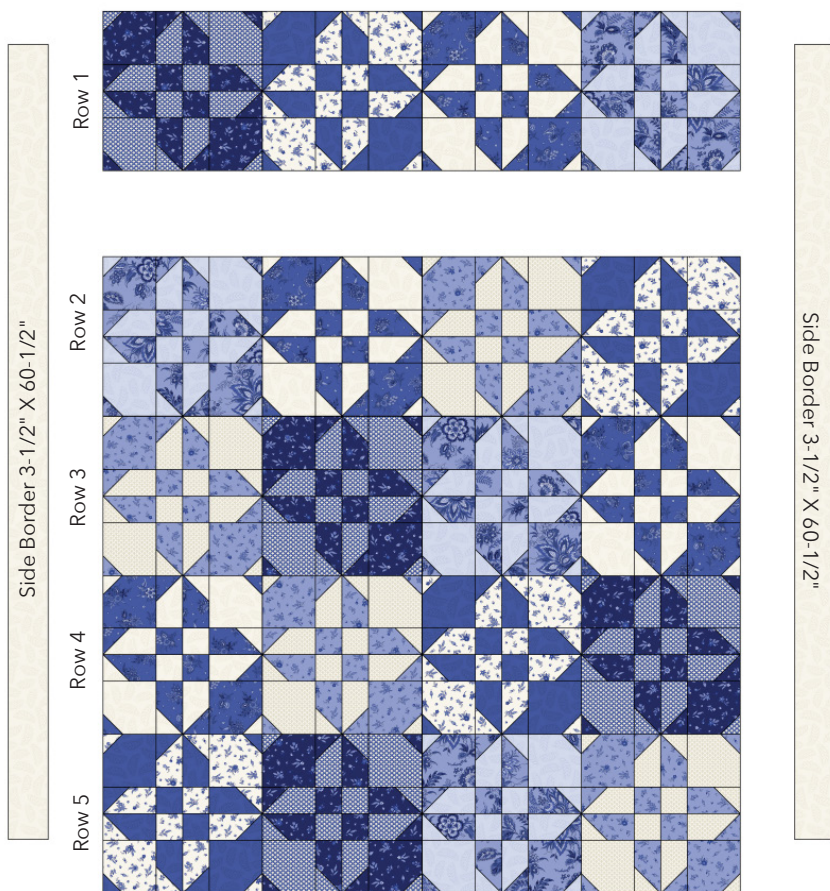


Top Assembly

Tip: Pin the borders onto the quilt top starting at the middle. Pin the ends and then pin inbetween.

1. Sew the side borders to the quilt top. Press.
2. Sew the top and bottom borders to the quilt top. Press.

Top Border 3-1/2" X 54-1/2"



Bottom Border 3-1/2" X 54-1/2"

Finishing

1. Layer the backing (wrong side up), batting and quilt top (right side up). Baste layers to secure. Quilt as desired. Trim the excess backing and batting.
2. Sew the binding strips together into one continuous strip. Press in half length-wise. Sew the binding to the quilt top with a 1/4" seam allowance. Turn the binding to the back side of the quilt and stitch down by hand with matching thread.

Quilt Planning Diagram

Use this diagram to plan your quilt top.

