

MAYWOOD  STUDIO

Hello Autumn Quilt



Hello Autumn Quilt by Monique Jacobs

Featuring the Hello Autumn collection by Monique Jacobs from Maywood Studio

50 $\frac{3}{4}$ " x 61"

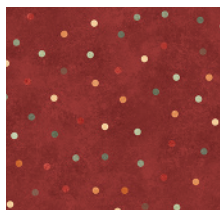
maywoodstudio.com

Hello Autumn

By Monique Jacobs



Fabric 1 - Green Fabric
10740-G

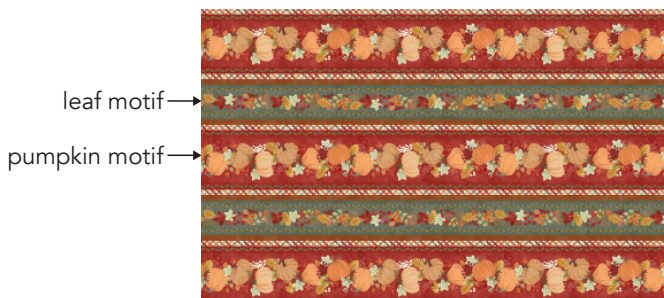


Fabric 2 - Red Dot
10739-RZ



Panel
10730-Z

Choose 12 different motifs for your quilt top.
Center and cut each motif $6\frac{3}{4}'' \times 6\frac{3}{4}''$.



Stripe
10731-Z
Cut along length of fabric.

MAYWOOD  STUDIO

Maywood Studio makes every effort to make sure our patterns are accurate.
Check for updates at maywoodstudio.com/projects

Fabric Requirements

Fabric 1	10740-G	3/4 yard
Fabric 2	10739-RZ includes binding	3/4 yard
Panel	10730-Z	3/4 yard *12 motifs
Stripe	10731-Z	2 yards
Backing	Your Choice	3-1/4 yards



Monique's Notes

Choose the motifs you like best for the blocks. There are many ways to arrange them. Have fun playing with different layouts!

Visit Monique's Website for more inspiration
www.opengatequilts.com

Cutting

From the panel fabric, cut:
 12 - 6¾" motifs

From the green fabric, cut:
 14 - 1½" x WOF strips, into:
 24 - 1½" x 6¾" rectangles
 24 - 1½" x 8¾" rectangles
 Set 5 strips aside for inner border

From the stripe fabric, cut:
 from the leaf motif, center and cut:
 4 - 3½" x 72" strips, into:
 31 - 3½" x 8¾"
 from the pumpkin motif, center and cut:
 4 - 6" x 72" strips

From the red dot fabric, cut:
 2 - 3½" x WOF strips, into:
 20 - 3½" squares
 6 - 2¼" x WOF strips

WOF - Width of Fabric
 LOF - Length of Fabric
 RST - Right Sides Together
 HST - Half Square Triangle

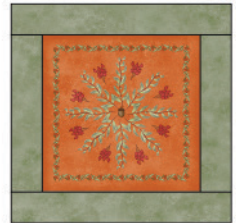
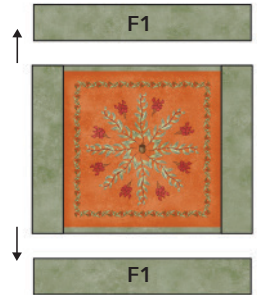
Hello Autumn Quilt Instructions

Please read all instructions before you begin. Seam allowance is $\frac{1}{4}$ ". Fabric is abbreviated as by number. For example, Fabric 1 is 'F1'. Press seams in the direction of the arrows.

Make the Blocks

1. Sew a $1\frac{1}{2}$ " x $6\frac{3}{4}$ " F1 green rectangle to opposite sides of a motif. Press toward F2.
2. Sew a $1\frac{1}{2}$ " x $8\frac{3}{4}$ " F1 green rectangle to the top and bottom of the motif. Press toward F2.

The blocks will measure $8\frac{3}{4}$ " square. Repeat for all 12 motifs.



$8\frac{3}{4}$ " x $8\frac{3}{4}$ "
Make 12 different
blocks

Piece the Sashing

1. Sew a 3-1/2" F2 square to the 3-1/2" x 9" leaf motif rectangles. Press toward the leaf motifs.



2. Repeat to make 15 step 1 units.

3. Lay the units out into 5 rows and sew the rows together. Press toward the leaf motifs..



4. Use the remaining F2 squares and sew one the end of each row.

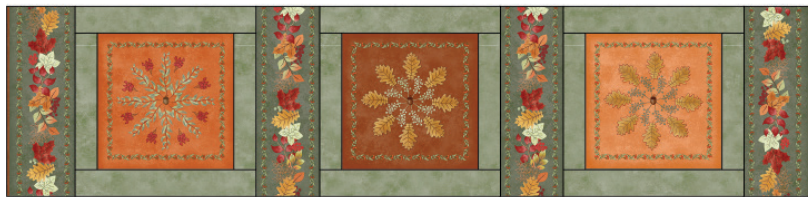
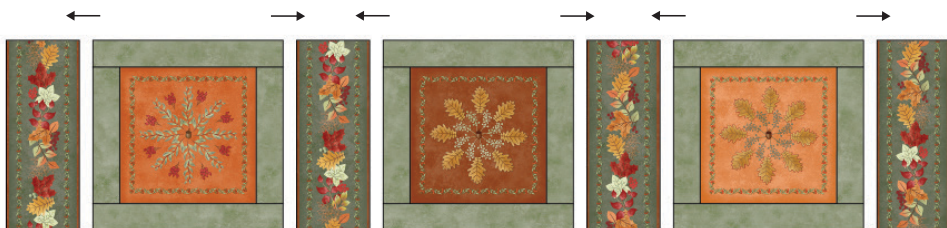


Sew the Blocks into Rows

1. Lay out the blocks and remaining leaf motif rectangles into 4 rows with 3 blocks each.

*Your rows might look different than these illustrations if you selected different motifs. It is also fun to play with the layout and create your original design.

2. Sew the rows together. Press toward the leaf motif rectangles



Add the Borders

Inner side borders

1. Measure the quilt top from top to bottom. Piece and cut the 1-1/2" strips of F1 to that length. Make 2.
2. Sew the inner side borders to the sides of the quilt top. Press toward F1.

Inner top and bottom borders

3. Measure the quilt top across the width of the quilt including the borders just added. Piece and cut the 1-1/2" strips of F1 to the length. Make 2.
4. Sew the inner top and bottom borders to the quilt top. Press toward F1.

Mitered Borders

5. Sew the pumpkin motif 6" x 72" borders to the quilt top.

*See p.8 for detailed instructions.

Finishing

1. Layer the backing (wrong side up), batting and quilt top (right side up). Baste layers to secure. Quilt as desired. Trim the excess backing and batting.
2. Sew the binding strips together into one continuous strip. Press in half length-wise. Sew the binding to the quilt with a 1/4" seam allowance. Turn the binding to the back side of the quilt and stitch down by hand with matching thread.

Mitered Borders



Mitered Borders

1. Mark the centers of each side of the quilt top with a pin.

2. Mark the centers of the border strips with a pin.

3. Match the centers of the border strips to the sides of the quilt and pin, RST. Sew together, starting and stopping 1/4" away from the edges of the quilt top. Backstitch to secure. Press seams toward borders. (Fig. 1)

4. Repeat to sew the top and bottom border strips to the quilt top.

5. Fold each border end back at a 45 degree and press, creating a crisp crease. (Fig. 2)

6. Fold the quilt on a diagonal, RST. Line up the raw edges of the borders and pin in place along the crease. Stitch together on the crease, stopping at the 1/4" seam. Backstitch to secure. (Fig. 3)

Fig. 3

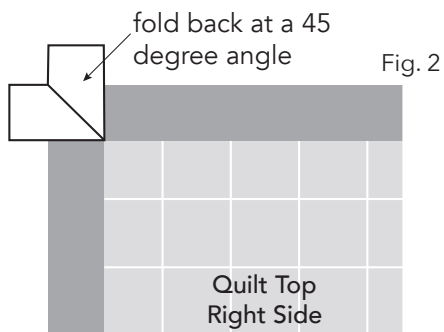
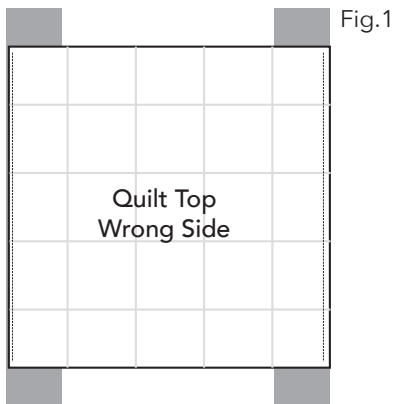
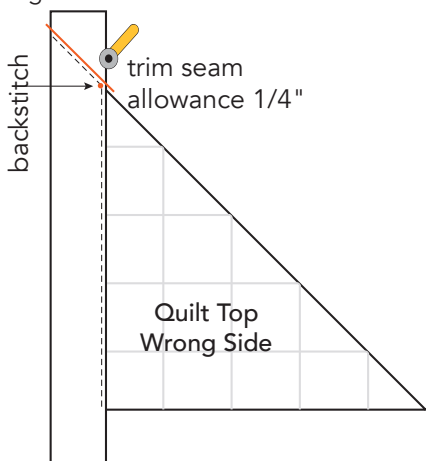
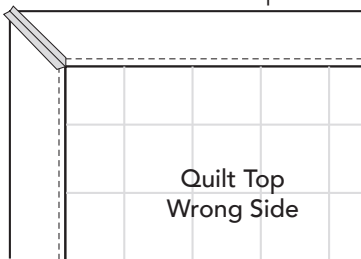


Fig. 4

press seam allowance open



7. Double check that your corner lays flat when you open it up. Trim seam allowance to 1/4" and press open. (Fig. 4)