

MAYWOOD  STUDIO

# JOYFUL QUILT



**Joyful Quilt by Maywood Studio**  
featuring the Joyful Collection

52½" x 66"

#madewithmaywood  
maywoodstudio.com





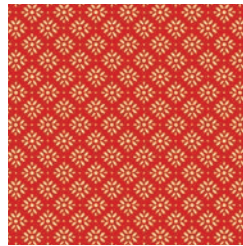
# MAYWOOD STUDIO



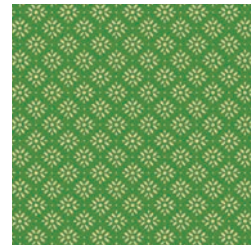
Fabric 1  
Birds  
9913-SW



Fabric 2  
Light Geo  
9918-SW



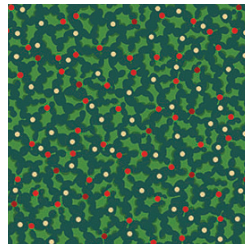
Fabric 3  
Red Geo Metallic  
M9919-R2



Fabric 4  
Green Geo Metallic  
M9919-G2



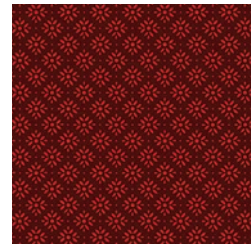
Fabric 5  
Green Pinecones  
9915-G



Fabric 6  
Green Holly  
9917-G



Fabric 7  
Dark Green Geo  
9918-G



Fabric 8  
Dark Red Geo  
9918-R

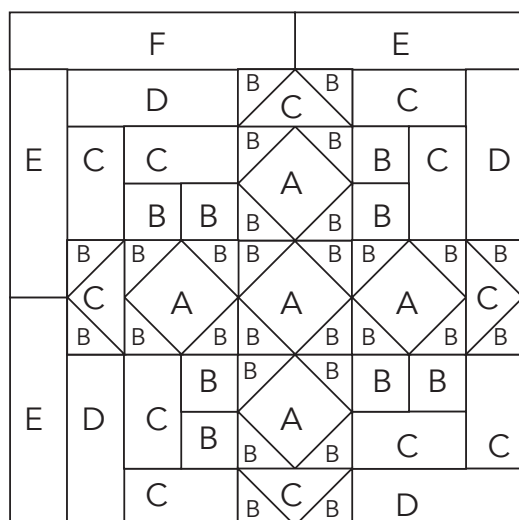


Fabric 9  
Border Stripe  
9914-G

## Fabric Requirements

Fabric 1	9913-SW	1/3 yard
Fabric 2	9918-SW	3/4 yard
Fabric 3	9919-R2	3/4 yard
Fabric 4	9919-G2	3/4 yard
Fabric 5	9915-G	1/2 yard
Fabric 6	9917-G	1/2 yard
Fabric 7	9918-G	1/2 yard
Fabric 8	9918-R includes binding	1 yard
Fabric 9	9914-G	2 yards
Backing	your choice	4 yards

WOF - Width of Fabric  
LOF - Length of Fabric  
RST - Right Sides Together  
HST - Half Square Triangle



Block is 13-1/2" x 13-1/2" finished  
(14" x 14" unfinished)

**Block 1**



**Block 2**



## Cutting

Finished Size 51" x 64"

### Fabric 1 Birds

A: (12) Fussy Cut 3.5 x 3.5" squares

### Fabric 2 Light Geo

Cut (5) 3.5" x WOF strips. Subcut into

A: (48) 3.5 x 3.5" squares

Cut (3) 2" x WOF strips. Subcut into

B: (48) 2 x 2" squares.

### Fabric 3 Red Geo Metallic

Cut (12) 2" x WOF strips. Subcut into

B: (120) 2 x 2" squares

C: (24) 2 x 3.5" rectangles

D: (24) 2 x 5" rectangles

### Fabric 4: Green Geo Metallic

Cut (12) 2" x WOF strips. Subcut into

B: (120) 2 x 2" squares

C: (24) 2 x 3.5" rectangles

D: (24) 2 x 5" rectangles

### Fabric 5: Green Pinecones

Cut (8) 2" x WOF strips. Subcut into:

B: (72) 2 x 2" squares

C: (48) 2 x 3.5" rectangles

\*Use leftover from B strip to cut for C

### Fabric 6: Green Holly

Cut (8) 2" x WOF strips. Subcut into:

B: (72) 2 x 2" squares

C: (48) 2 x 3.5" rectangles

\*Use leftover from B strip to cut for C

### Fabric 7: Dark Green Geo

Cut (6) 2" x WOF strips. Subcut into:

F: (21) 2 x 6.5" rectangles

G: (10) 2 x 8" rectangles

### Fabric 8: Dark Red Geo

Cut (6) 2" x WOF strips. Subcut into:

F: (21) 2 x 6.5" rectangles

G: (10) 2 x 8" rectangles

Cut (6) 2.5" x WOF strips for binding.

### Fabric 9: Border Stripe \*Cut Length of Fabric

Cut (2) 5.5 x 70"

Cut (2) 5.5 x 56"

## Joyful Quilt Instructions

Please read all instructions before you begin. Seam allowance is 1/4" unless otherwise stated.

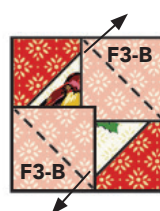
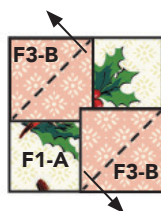
Do not prewash fabric. Use a light sizing or starch to stabilize pieces before sewing.

Fabric will be abbreviated to 'F'. For example, F2 refers to Fabric 2.

### Make the block center units.

Gather the (12) F1-A fussy cut bird squares, (24) F3-B and (24) F4-B-squares.

❑ 1. Mark a diagonal line from corner to corner on the F3-B squares. Place the F3-B squares on opposite sides of the F1-A square. Sew on the marked line. Trim 1/4" away from the stitching. Press away from center. Make 6.

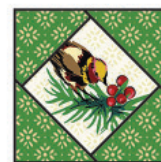


### Block 1



Make 6  
3-1/2" x 3-1/2"

### Block 2



Make 6  
3-1/2" x 3-1/2"

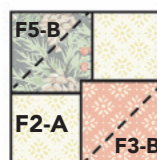
❑ 2. Place a F3-B square to opposite sides of the step 1 unit. Sew on the marked lines. Trim 1/4" away from the stitching. Press away from center. Make 6.

❑ 3. Repeat steps 1-2 using the remaining F1-A bird blocks and the F4-B squares.

Gather the (48) F2-A squares, (48) F3-B squares, (48) F4-B squares, (48) F5-B squares, and (48) F6-B-squares.

❑ 4. Mark a diagonal line from corner to corner on the B squares.

❑ 5. Follow the diagrams for Block 1 to sew the F3 and F5-B squares on the corners of (24) F2-A squares.

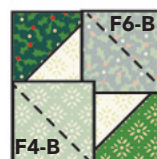


### Block 1



Make 24  
3-1/2" x 3-1/2"

❑ 6. Follow the diagrams for Block 2 to sew the F4 and F6-B squares on the corners of (24) F2-A squares.



### Block 2



Make 24  
3-1/2" x 3-1/2"

### Make the flying geese units.

\*Note - you will be making mirror image units.

Follow the illustrations for fabric placement.

Gather (24) each F5 and F6-C rectangles, and (48) each F3 and F4-B square.

❑ 1. Mark a diagonal line from corner to corner on each B square. Place a F4-B square on the left corner of a F5-rectangle. Sew on the marked line. Trim 1/4" away from the stitching. Press away from center. Make 12.

### Block 1



F5-C



Make 12  
2" x 3-1/2"



Make 12  
2" x 3-1/2"

❑ 2. Place a F3-B square to opposite sides of the step 7 unit. Sew on the marked lines. Trim 1/4" away from the stitching. Press away from center. Make 12.

### Block 2



Make 12  
2" x 3-1/2"



Make 12  
2" x 3-1/2"

❑ 3. Repeat steps 1 and 2 to make the remaining flying geese units. See illustration to the right.



## Make the corner units.

**Block 1:** Gather (24) each: F2-B, F5-B, F5-C and (12) each: F3-C, F3-D, F4-C, F4-D.

**Block 2:** Gather (24) each: F2-B, F6-B, F6-C and (12) each: F3-C, F3-D, F4-C, F4-D.

❑ 1. Sew (24) F5-B and F2-B squares together. Press toward F5. Make 24.

❑ 2. Sew a F5-C rectangle to each step 1 unit. Press toward C. Make 24.

### On 12 Step 2 units:

❑ 3. Sew a F3-C rectangle to the step 2 unit. Press toward F3.

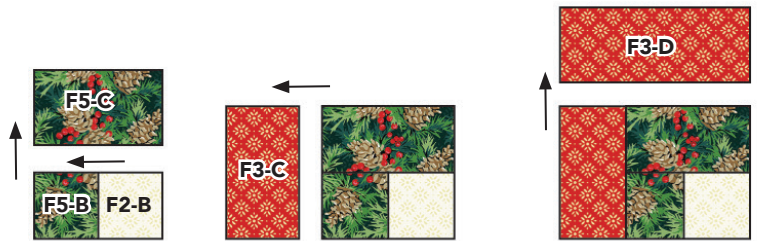
❑ 4. Sew a F3-D rectangle to the step 3 unit. Press toward F3.

### On the remaining 12 Step 2 units:

❑ 5. Sew a F4-C rectangle to the step 2 unit. Press toward C.

❑ 6. Sew a F4-D rectangle to the step 5 unit. Press toward D.

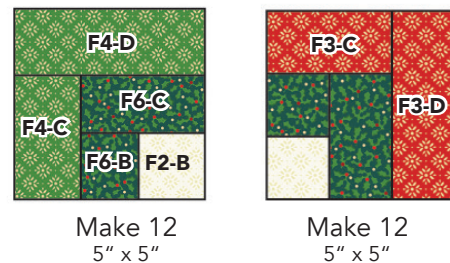
**Repeat** steps 1-6 to make the Block 2 units. Follow the illustrations to the right.



## Block 1



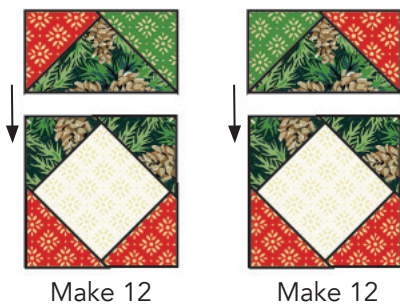
## Block 2



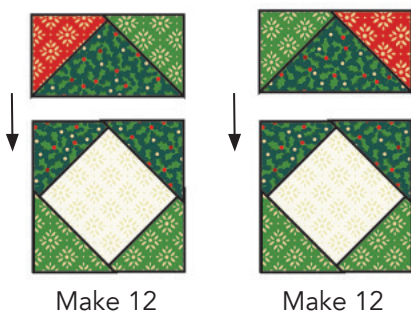
## Assemble the blocks.

Sew the flying geese units to the matching center units as illustrated. Press toward center.

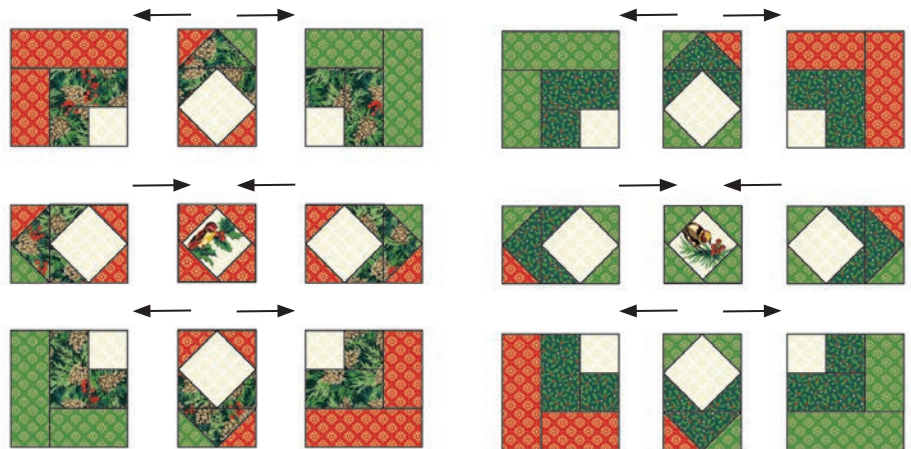
### Block 1



### Block 2



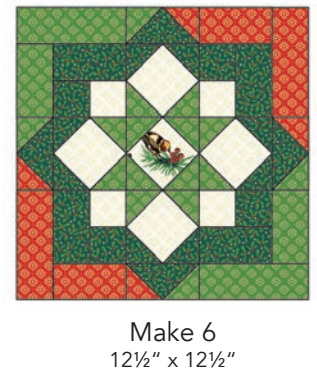
**Follow the layouts below to sew the blocks together. Sew into rows and then sew row to row. Press to nest.**



### Block 1



### Block 2



## Add the sashing strips.

Gather the F7-F & G and F8-F and G rectangles.

*\*Note: the reds match up to the reds and the greens match up to the greens.*

❑ 1. Sew (12) F8-F (red) rectangles to (12) F7-F (green) rectangles. Sew to the left side of each Block 1 and Block 2. Make sure to orient the red next to the red and the green next to the green as illustrated.

❑ 2. Block 1: Sew (9) F8-G rectangles to (9) F7-F rectangles together. Sew (6) of them to the top of Block 1. Reserve 3.

❑ 3. Block 2: Sew (9) F7-G rectangles to (9) F8-F rectangles. Sew (6) of them to the tops of Block 2. Reserve 3.

❑ 4. Sew (2) reserved Step 2 sashing strips to the bottom of (2) Block 2s. Make sure to match the red to the red and the green to the green.

❑ 5. Sew (1) reserved Step 3 sashing strip to the bottom of (1) Block 1. Make sure to match the green to the green and the red to the red.

❑ 6. Sew the blocks into (4) rows as illustrated on p.7. Press rows in opposite directions.

❑ 7. Sew the remaining reserved sashing strips to the ends of each row as illustrated on p.7.

**Row 1:** Block 1 - Block 2 - Block 1 - F7-G/F8-F

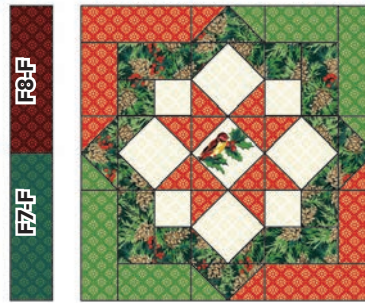
Row 2: Block 2 - Block 1 - Block 2 - F8-G/F7-F

Row 3: Block 1 - Block 2 - Block 1 - F7-G/F8-F

Row 4: Block 1-Block 2 - Block 1 - Sew (1) F7-G to (1) F8-G, then sew to the end of Row 4.

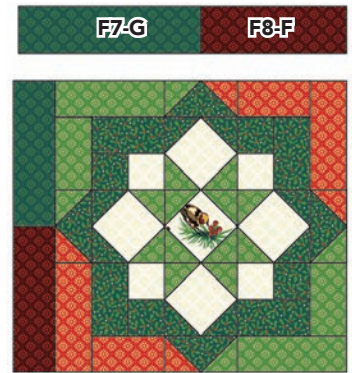
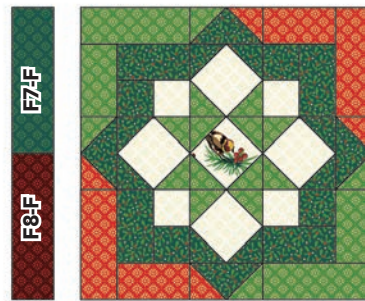
❑ 8. Sew row to row. Press in one direction.

**Block 1**



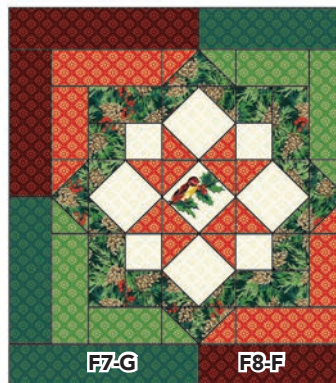
Make 6  
14" x 14"

**Block 2**



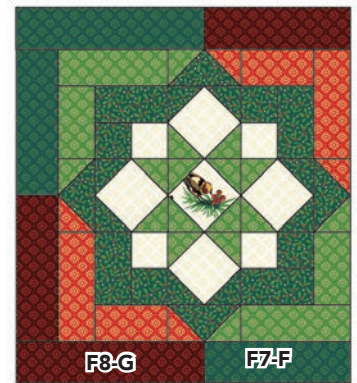
Make 6  
14" x 14"

**Block 1**



Add the bottom sashing to  
(1) Block 1

**Block 2**

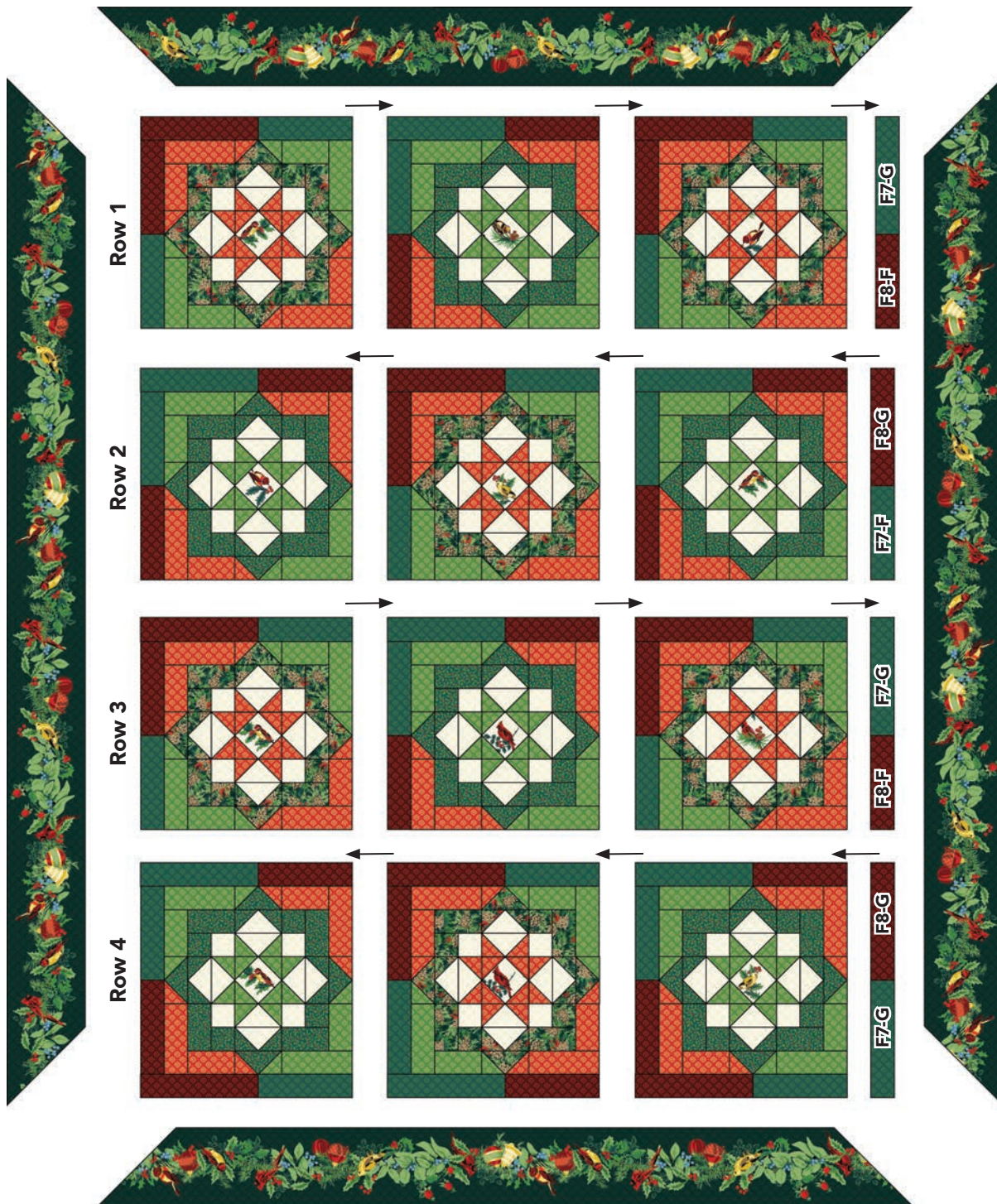


Add the bottom sashing to  
(2) Block 2s



## Finish the Quilt.

- ❑ 1. Sew a F9 border strip to the top and bottom of the quilt top, making sure to stop and start 1/4" away from each end of the quilt top. To miter each corner, fold the quilt top on a diagonal, wrong sides together. This should line up the strips from adjacent sides.
- ❑ 2. Starting at the sewn seam, draw a 45° line to the edge of the fabric. Sew on that line. Trim the excess fabric leaving a 1/4" seam. Repeat on remaining corners.



- ❑ 3. Layer the backing (wrong side up), batting and quilt top (right side up). Baste layers to secure. Quilt as desired. Trim the excess backing and batting.
- ❑ 4. Sew the binding strips together into one continuous strip. Press in half length-wise. Sew the binding to the quilt top with a 3/8" seam allowance, mitering the corners. Turn the binding to the back side of the quilt and stitch down by hand with matching thread.

## Quilt Planning Diagram

