

MAYWOOD  STUDIO

# Thread Work



## Thread Work Quilt

Featuring fabrics from the Kimberbell Basics Flannel collection.

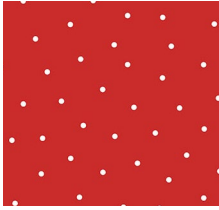
**44" x 58"**

[maywoodstudio.com](http://maywoodstudio.com)

# KIMBERBELL®

## BASICS

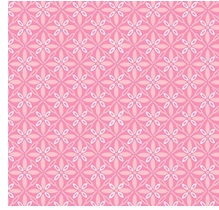
### FLANNEL



Fabric 1  
MASF8210-R2



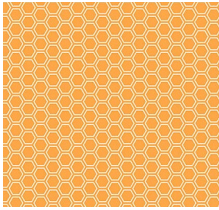
Fabric 2  
MASF8261-P2



Fabric 3  
MASF9396-P



Fabric 4  
MASF8260-P2



Fabric 5  
MASF8256-O2



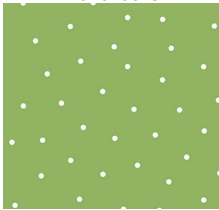
Fabric 6  
MASF8260-O2



Fabric 7  
MASF8261-S2



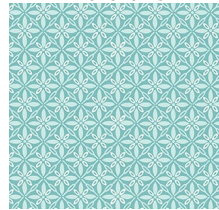
Fabric 8  
MASF8261-G2



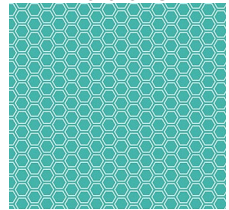
Fabric 9  
MASF8210-GW



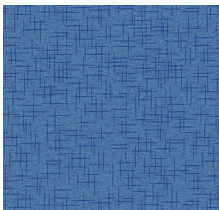
Fabric 10  
MASF8261-Q2



Fabric 11  
MASF9396-Q



Fabric 12  
MASF8256-Q



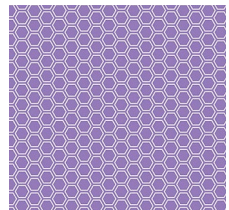
Fabric 13  
MASF9399-B



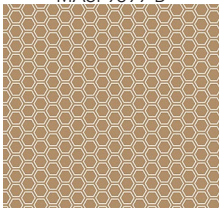
Fabric 14  
MASF8210-N



Fabric 15  
MASF8260-V2



Fabric 16  
MASF8256-V2



Spool Fabric 17  
MASF8256-A



Background F18  
MASF8210-WE

MAYWOOD  STUDIO

Thread Work Quilt © Maywood Studio all rights reserved

## Fabric Requirements

10" Squares F1-16	SQ-MASKBBF-RAWI	1 pack
Spool F17	MASF8256-A	1/2 yard
Background F18	MASF8210-WE	1-1/2 yards
Binding	MASF8256-Q	1/2 yard
Backing		3 yards



### SQ-MASKBBF-RAWI

Note: There are multiples of each fabric in a pack of 10" squares. We used one of each of the fabrics shown on p.2 to make this version of the Thread Work Quilt.

WOF - Width of Fabric  
 LOF - Length of Fabric  
 RST - Right Sides Together  
 HST - Half Square Triangle

## Cutting

Finished size: 44 x 58

### Fabrics 1-16

From each cut (1) 6-1/2" x 8-1/2" A rectangle

### F17 Spool

Cut (2) 2-1/2" x WOF strips into:  
 (32) 2-1/2" x 8-1/2" B rectangles

### F18 Background

Cut (3) 1-1/2" x WOF strips into:  
 (64) 1-1/2" x 1-1/2" C squares

Cut (3) 2-1/2" x WOF strips into:  
 (64) 1-1/2" x 2-1/2" D rectangles

Cut (2) 8-1/2" x WOF strips into:  
 (32) 2-1/2" x 8-1/2" E rectangles

### Sashing/Borders

Cut (8) 2-1/2" x WOF strips. Cut into:  
 (3) 2-1/2" x 40-1/2" sashing strips

Sew the remaining (5) 2-1/2" x WOF strips together end to end. Cut into:  
 (2) 2-1/2" x 54-1/2" side borders  
 (2) 2-1/2" x 44-1/2" top and bottom borders

### Binding

Cut (6) 2-1/2" x WOF strips

Maywood Studio makes every effort to make sure our patterns are accurate.  
 Check for updates at [maywoodstudio.com/projects](http://maywoodstudio.com/projects)

## Thread Work Quilt Instructions

Please read all instructions before you begin. Seam allowance is 1/4". Fabric is abbreviated as 'F' - for example, F1 refers to Fabric 1. Press all seams open.

### Spool Top and Bottom Units

1. Mark a diagonal line from corner to corner on the wrong side of the F18-C Background squares.



2. Place an F18-C square, RST over an F17-B rectangle. Sew on the marked line.



3. Cut 1/4" away from the sewn line. Press.



Step 4 Unit  
Make 32  
2-1/2" x 8-1/2"

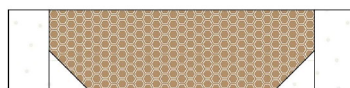
5. Sew an F18-D rectangle to the left and right sides of a step 4 unit. Press.



6. Repeat to make 32 Spool Top and Bottom Units

**F18-D**

**F18-D**



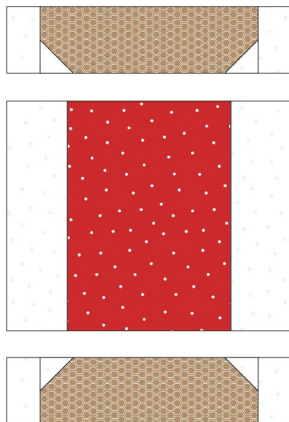
Spool Top and Bottom Unit  
Make 32  
2-1/2" x 10-1/2"

## Spool Blocks

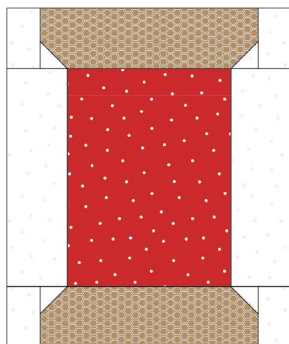
1. Make the center section. Sew an F18-E rectangle to the left and right sides of an F1-A rectangle. Press.
2. Sew a spool top and bottom unit to the step 1 center section. Make sure to turn the units so the narrow section matches up with the F1-A rectangle. Press.
3. Repeat steps 1-2 using fabrics 2-16 to make a total of 16 spool blocks.



Step 1  
Make the center section



Step 2  
Add the spool units

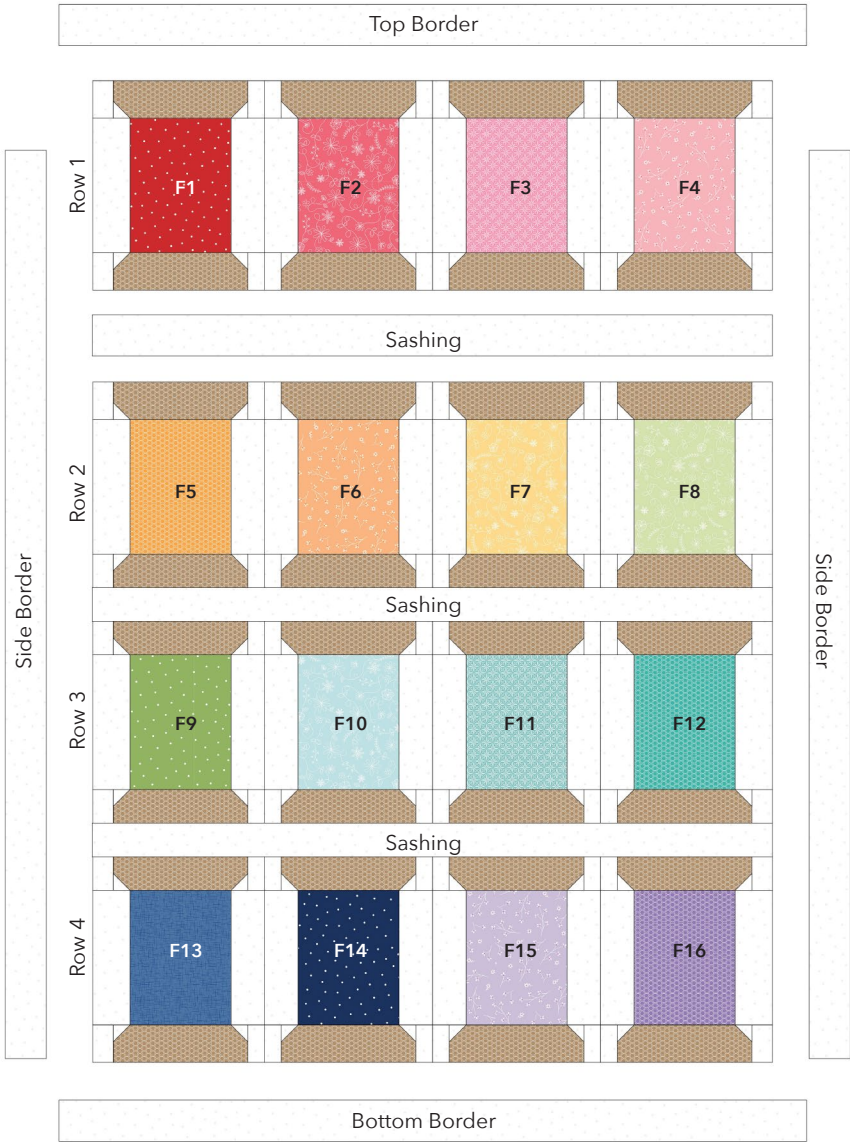


Make one of each  
using F1-F16 fabrics  
10-1/2" x 12-1/2"



**Sew the Rows**

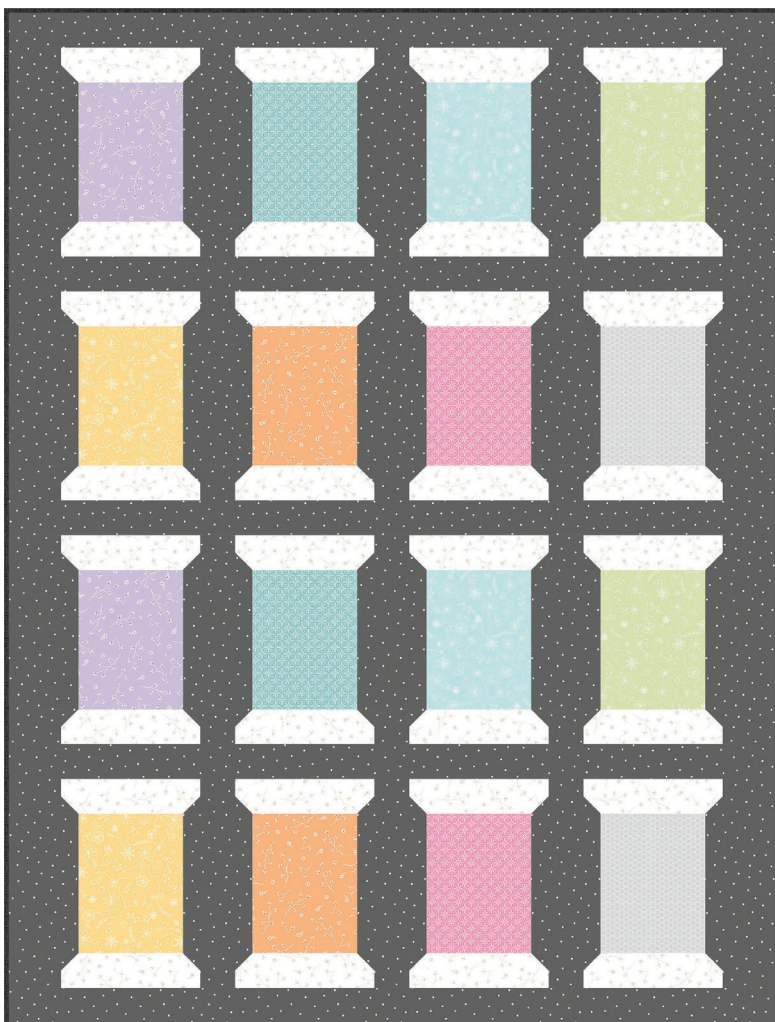
- 1 Arrange the blocks into 4 rows as illustrated below. Sew the blocks into rows. Press.
- 2. Sew a sashing strip between each row. Press.
- 3. Sew the side borders to the quilt top. Press.
- 4. Sew the top and bottom borders to the quilt top. Press.



## Finishing

1. Layer the backing (wrong side up), batting and quilt top (right side up). Baste layers to secure. Quilt as desired. Trim the excess backing and batting.
2. Sew the binding strips together into one continuous strip. Press in half length-wise. Sew the flannel binding to the quilt top with a  $\frac{3}{8}$ " seam allowance. Turn the binding to the back side of the quilt and stitch down by hand with matching thread.

Mix and match your favorite Kimberbell Basics Flannel fabrics to make your own version of the Thread Work Quilt. We used pairs of fabrics from the Sweet Dreams 10" squares, the white pretty petals print, and the grey/white small dot for the background to illustrate the version below.



## Thread Work Quilt

Use this coloring page to plan your quilt.

