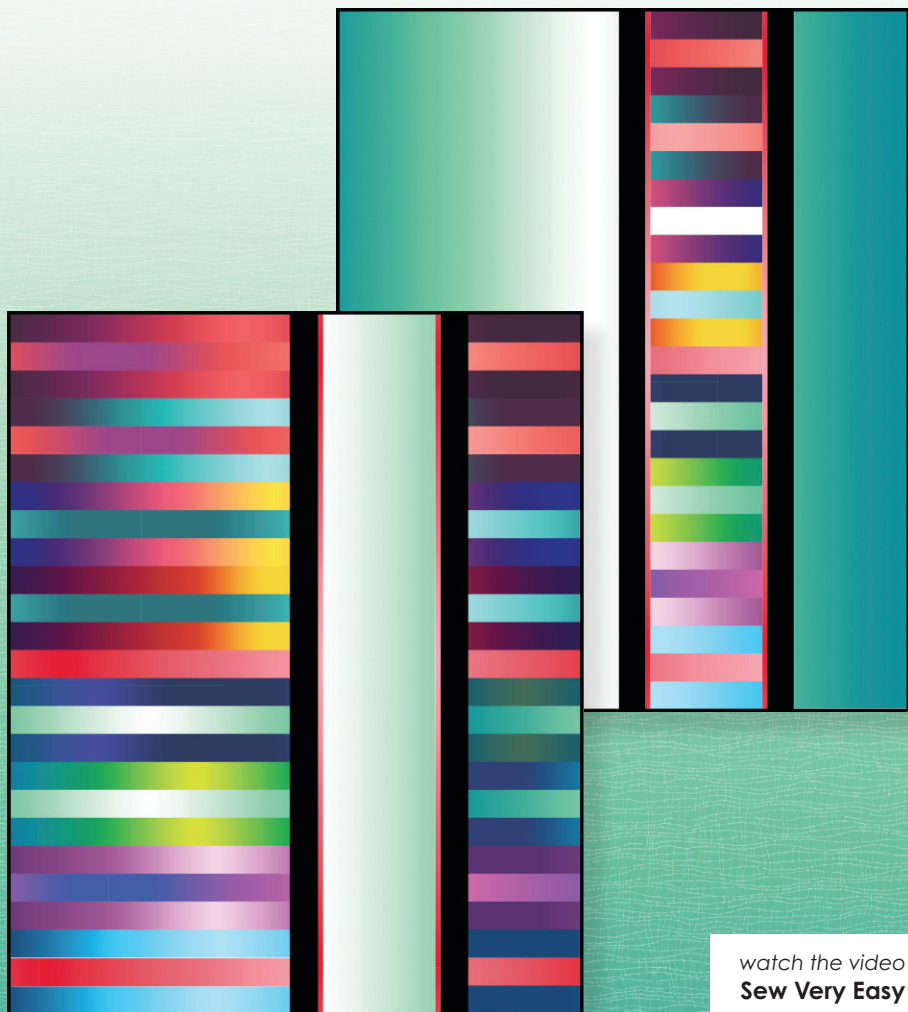


MAYWOOD  STUDIO

Parfait Quilt



watch the video
Sew Very Easy
 YouTube

Parfait Quilt - Two in One!
41" x 50"

Featuring the Gelato Fabric Collection
2½" Strip-Friendly

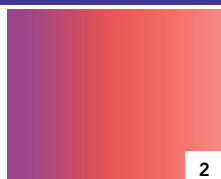
maywoodstudio.com



FABRICS USED IN THE GELATO PARFAIT QUILT



VMP



MCP



QV



BPS



Q2



302



P2 + flange



NBQ



306 + background



BQS



205



BVP *1 strip



B



Black borders + binding

WOF - Width of Fabric
LOF - Length of Fabric
RST - Right Sides Together
HST - Half Square Triangle

FABRIC REQUIREMENTS		
F1-13 2-1/2" STRIPS	ST-MASGELA	1 PACK OF 2-1/2" STRIPS
FABRIC 7	MAS11216-P2	1/4 YARD FLANGES
FABRIC 9	MAS11216-306	1-1/2 YARDS
FABRIC 14	MASBLM BACKGROUND	1/2 YARD SASHING
	*BINDING SEE BELOW	3/8 YARD EACH
BACKING	*SEE BELOW	3-1/2 YARDS EACH OR 1-1/2 YARDS FOR BORDERS

PARFAIT QUILT - 2 WAYS: Follow Along with the video by Sew Very Easy on youtube to learn tips and techniques for piecing the Parfait quilt.

STRIPS: For the version on the cover, we have used 13 different fabrics - 12 are pairs - in our layout. Follow our illustrations or arrange the fabrics to your liking.

BACKING:
You will need 3-1/2 yards for each quilt for the backing. For a reversible quilt you will only need 1-1/2 yards to add the borders.

BINDING:
Two Quilts: You will need 3/8 yard for each quilt.
One Quilt: You will only need 3/8 yard for the binding.

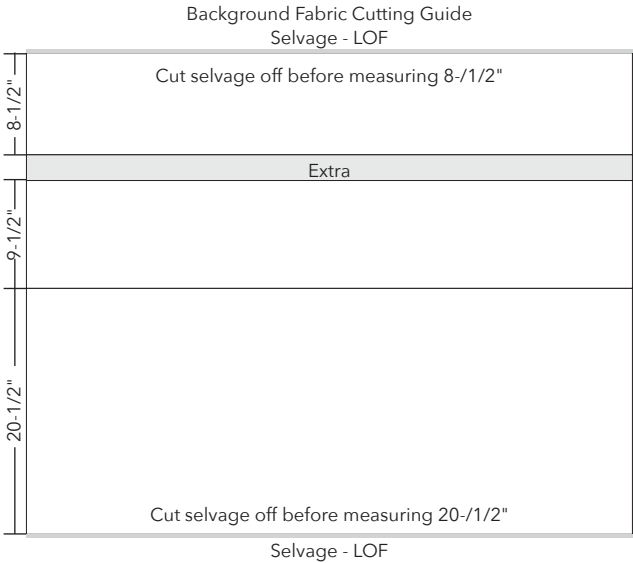
CUTTING

From your 2-1/2" strips:
Select 12 pairs of strips and one single strip.
OR
From yardage:
Fabrics 1, 2, 3, 4, 5, 6, 7, 8, 9, 10, 11, and 13.
Cut (2) 2-1/2" x WOF strips
Fabric 12
Cut (1) 2-1/2" x WOF strips

Fabric 7
Flanges: Cut (6) 1" x WOF strip

Fabric 9 *See cutting guide
Cut the following pieces along the LOF (Length of Fabric)
(1) 20-1/2" x 50-1/2"
(1) 9-1/2" x 50-1/2"
(1) 8-1/2" x 50-1/2" *Line this up with the selvage as illustrated below. There will be a small amount of extra between this cut and the 9" cut.

Fabric 14
Sashing
(6) 2-1/2" x WOF strips
Binding
Cut (5) 2-1/2" x WOF strips for each quilt.
Note: you will need (10) 2-1/2" x WOF strips if you are making two quilts, and (5) if you are making one reversible quilt.



Cut off selvages

Cut off selvages and extra fabric

- | 20-1/2" | 9-1/2" | 8-1/2" |
|-------------------------------|--------|--------|
| Fabric 1 - VMP | | |
| Fabric 2 - MCP | | |
| Fabric 1 - VMP | | |
| Fabric 3 - QV | | |
| Fabric 2 - MCP | | |
| Fabric 3 - QV | | |
| Fabric 4 - BPS | | |
| Fabric 5 - Q2 | | |
| Fabric 4 - BPS | | |
| Fabric 6 - 302 | | |
| Fabric 5 - Q2 | | |
| Fabric 6 - 302 | | |
| Fabric 7 - P2 | | |
| Fabric 8 - NBQ | | |
| Fabric 9 - 306 | | |
| Fabric 8 - NBQ | | |
| Fabric 10 - BQ5 | | |
| Fabric 9 - 306 | | |
| Fabric 10 - BQ5 | | |
| Fabric 11 - 205 | | |
| Fabric 12 - BVP *1 strip only | | |
| Fabric 11 - 205 | | |
| Fabric 13 - B | | |
| Fabric 7 - P2 | | |
| Fabric 13 - B | | |

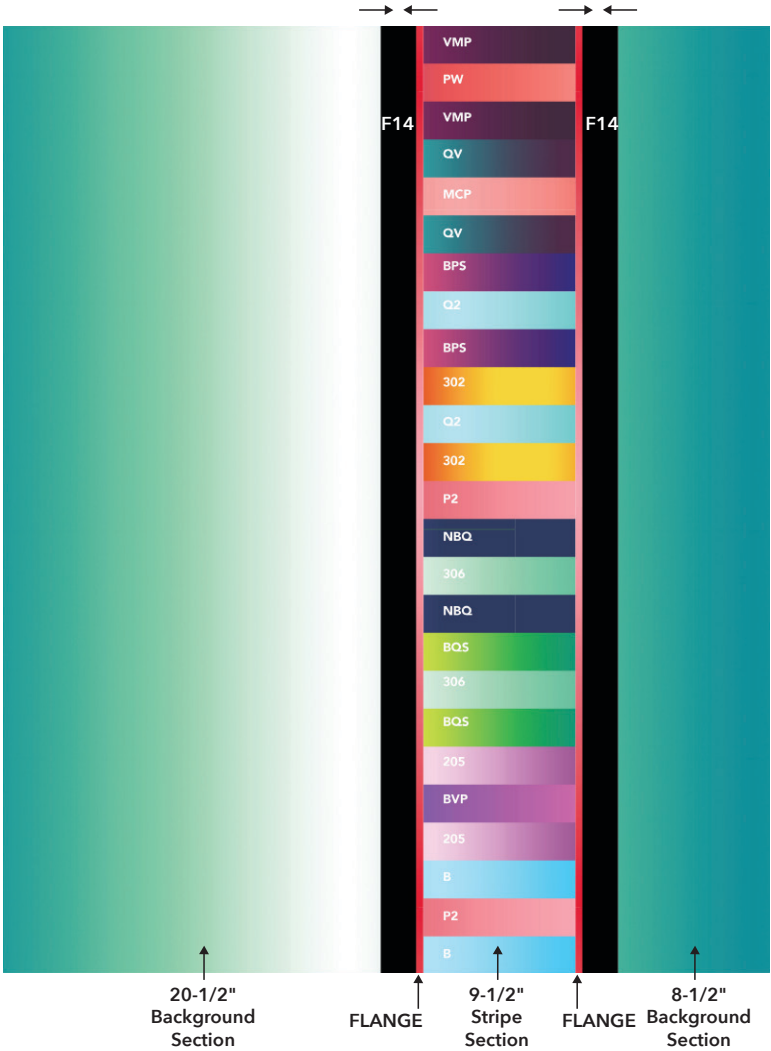
Quilt Top 1

1. Sew the F7 1" flange strips together end to end. Press in 1/2 length-wise. Cut into (4) 50-1/2" strips.
2. Matching the raw edges with the folded edge toward the center, baste and sew a flange strip to either side of the 9-1/2" background section.
3. Sew (6) F14 Black sashing strips together end to end. Cut into (4) 2-1/2" x 50-1/2" lengths.
4. Sew an F14 black sashing strip to either side of the background section, sandwiching the flange, and matching the raw edges. Press the flanges and the sashing away from the background section.
4. Sew the 20-1/2' and 8-1/2" stripe sections to either side of the step 3 section referring to the illustration below. Press toward F14.



Quilt Top 2

- 1. Matching the raw edges with the folded edge toward the center, baste and sew a flange strip to either side of the 9-1/2" stripe section.
- 2. Sew an F14 black sashing strip to either side of the step one section, matching the raw edges. Press the flanges and the sashing away from the stripe section.
- 4. Sew the remaining background sections to either side of the step 2 section, referring to the illustration below. Press toward F14.



Finishing for two separate quilts

1. Layer the backing (wrong side up), batting and quilt top (right side up). Baste layers to secure. Quilt as desired. Trim the excess backing and batting.

2. Sew the binding strips together into one continuous strip. Press in half length-wise. Sew the binding to the quilt top with a 1/4" seam allowance. Turn the binding to the back side of the quilt and stitch down by hand with matching thread.

Finishing for a reversible quilt (illustrated below):

Cut the following borders LOF. You will need 1-1/2 yards of F14

Quilt Top 1

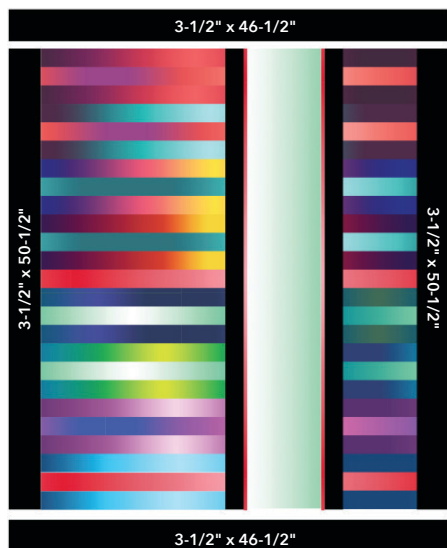
1. Sew a 3-1/2" x 50-1/2" F14 border to the sides of Quilt Top 1.
2. Sew a 3-1/2" x 46-1/2" F14 border to the top and bottom of Quilt Top 1.

Quilt Top 2

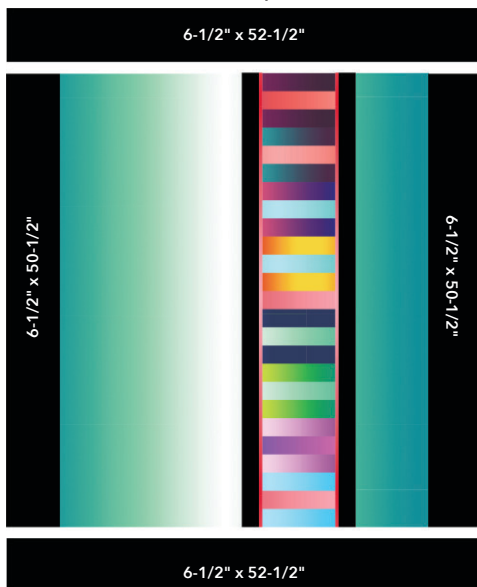
3. Sew a 6-1/2" x 50-1/2" F14 border to the sides of Quilt Top 2.
 4. Sew a 6-1/2" x 52-1/2" F14 border to the top and bottom of Quilt Top 2.
5. Follow step 1 & 2 above, replacing Quilt Top 2 with the backing.

Adding Borders for reversible version

Quilt Top 1



Quilt Top 2



Quilt Planning Diagram Use this template to plan your quilt

Fabric 1	Fabric 1
Fabric 2	Fabric 2
Fabric 1	Fabric 1
Fabric 3	Fabric 3
Fabric 2	Fabric 2
Fabric 3	Fabric 3
Fabric 4	Fabric 4
Fabric 5	Fabric 5
Fabric 4	Fabric 4
Fabric 6	Fabric 6
Fabric 5	Fabric 5
Fabric 6	Fabric 6
Fabric 7	Fabric 7
Fabric 8	Fabric 8
Fabric 9	Fabric 9
Fabric 8	Fabric 8
Fabric 10	Fabric 10
Fabric 9	Fabric 9
Fabric 10	Fabric 10
Fabric 11	Fabric 11
Fabric 12 - I strip only	Fabric 12 - I strip only
Fabric 11	Fabric 11
Fabric 13	Fabric 13
Fabric 7	Fabric 7
Fabric 13	Fabric 13

Fabric 1	Fabric 1
Fabric 2	Fabric 2
Fabric 1	Fabric 1
Fabric 3	Fabric 3
Fabric 2	Fabric 2
Fabric 3	Fabric 3
Fabric 4	Fabric 4
Fabric 5	Fabric 5
Fabric 4	Fabric 4
Fabric 6	Fabric 6
Fabric 5	Fabric 5
Fabric 6	Fabric 6
Fabric 7	Fabric 7
Fabric 8	Fabric 8
Fabric 9	Fabric 9
Fabric 8	Fabric 8
Fabric 10	Fabric 10
Fabric 9	Fabric 9
Fabric 10	Fabric 10
Fabric 11	Fabric 11
Fabric 12 - I strip only	Fabric 12 - I strip only
Fabric 11	Fabric 11
Fabric 13	Fabric 13
Fabric 7	Fabric 7
Fabric 13	Fabric 13