

MAYWOOD  STUDIO

Silver Jubilee Quilt



Silver Jubilee Quilt by Maywood Studio
featuring the Silver Jubilee Collection

61½" x 67½"

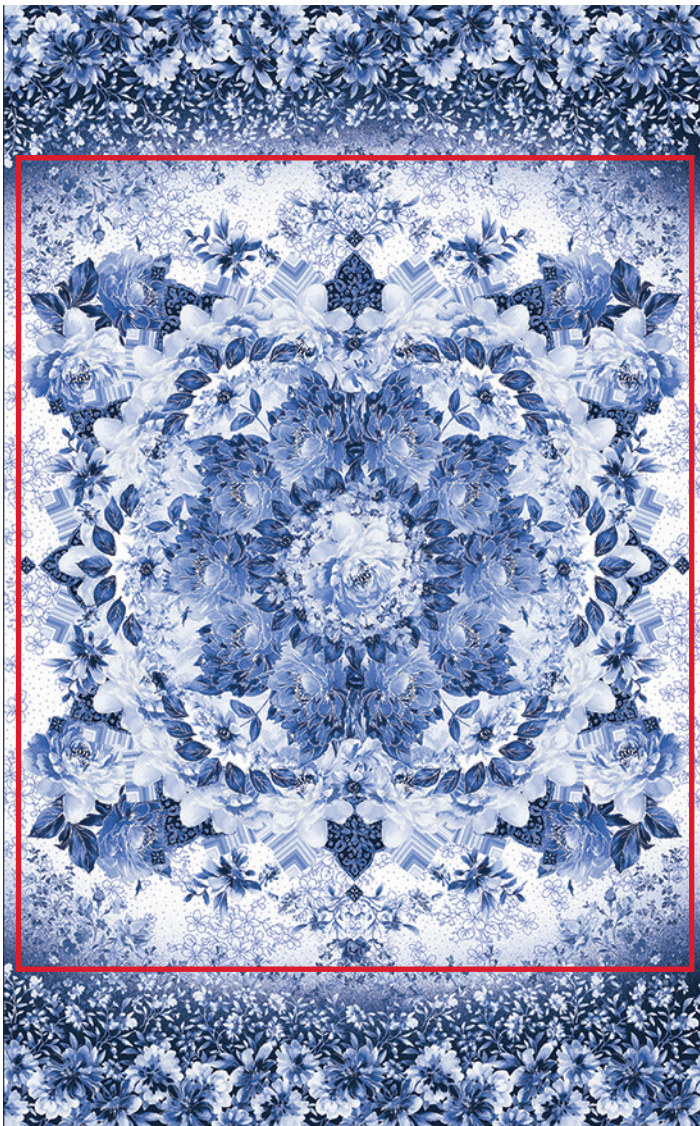
#madewithmaywood
maywoodstudio.com



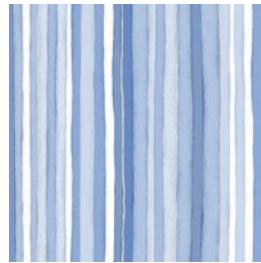
MAYWOOD STUDIO



Trim the panel to 25-1/2" x 31-1/2"



Fabric 1 Panel
2500-UW



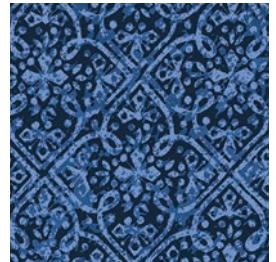
Fabric 2
2511-B



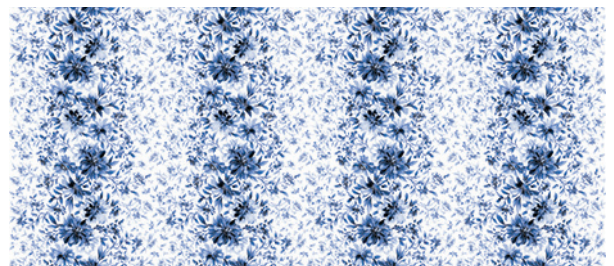
Fabric 3
2506-N



Fabric 4
2504-N



Binding
2505-N

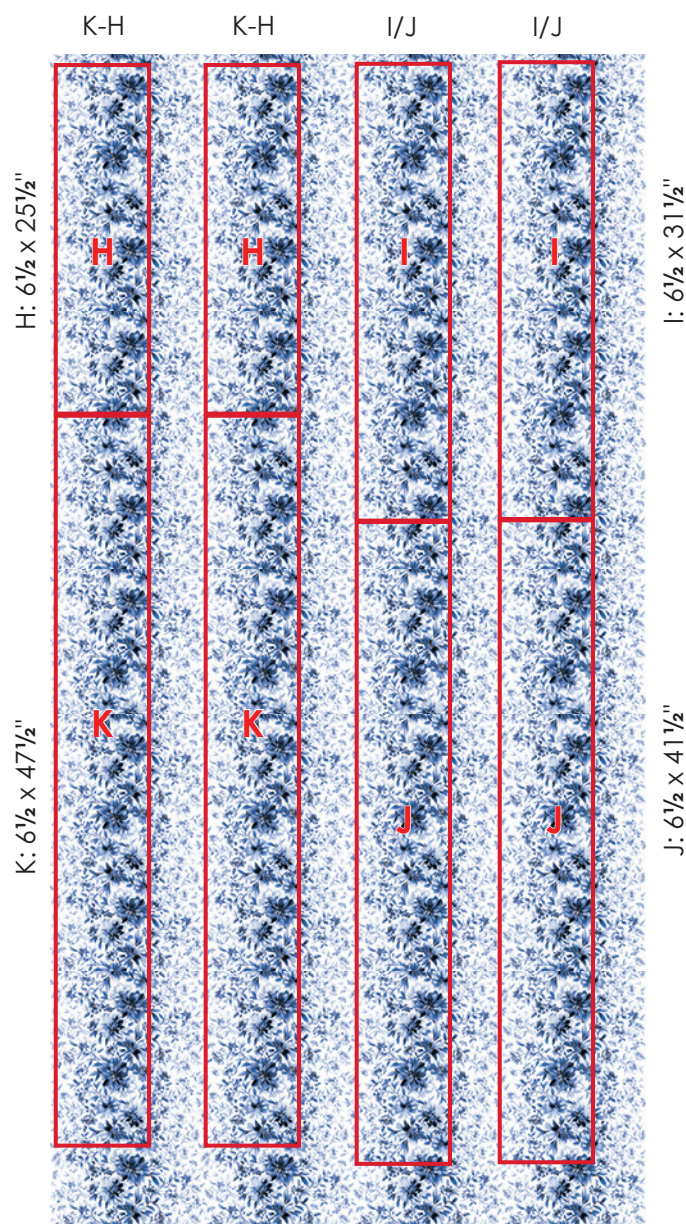


Fabric 5
2502-UW

Fabric Requirements

Fabric 1	M2500-UW	1 panel
Fabric 2	M2511-B	1/3 yard
Fabric 3	2506-N	1 yard
Fabric 4	2504-N	3/4 yards
Fabric 5	M2502-UW	2-1/2 yards
Binding	2505-N	5/8 yard
Backing	your choice	4 yards

Fabric 5 Stripe Cutting Guide



Cutting

Finished Size 61-1/2" x 67-1/2"

Fabric 1 Panel

Mark and trim the panel to
25-1/2" x 31-1/2"

Fabric 2 Stripes

Cut (2) 5" x WOF strips

A: Subcut (16) 5" x 5" squares

Fabric 3 Medium Floral

Cut (1) 4-1/2" x WOF strip.

Subcut into

B: (8) 4-1/2" x 4-1/2" squares

Cut (9) 2-1/2" x WOF strips

Sew together and subcut into:

D (2) 2-1/2" x 25-1/2" strips

E (2) 2-1/2" x 31-1/2" strips

L: (2) 2-1/2" x 61-1/2" strips

M: (2) 2-1/2" x 63-1/2" strips

Fabric 4 Small Floral

Cut (1) 4-1/2" x WOF strip.

C: Subcut into (8) 4-1/2" x 4-1/2" squares

Cut (5) 2-1/2" x WOF strips

Sew together end to end and
subcut into:

F (2) 2-1/2" x 41-1/2" strips

G (2) 2-1/2" x 47-1/2" strips

Fabric 5 Border Stripe

Cut LOF (Length of Fabric) See stripe cutting
(to the left) for reference. Mark the sections as
illustrated before cutting.

H: (2) 6-1/2" x 25-1/2" strips

I: (2) 6-1/2" x 31-1/2" strips

J: (2) 6-1/2" x 41-1/2" strips

K: (2) 6-1/2" x 47-1/2" strips

Binding

Cut (7) 2-1/2" x WOF strips

WOF - Width of Fabric
LOF - Length of Fabric
RST - Right Sides Together
HST - Half Square Triangle

Silver Jubilee Quilt Instructions

Please read all instructions before you begin. Seam allowance is 1/4" unless otherwise stated. Fabric is abbreviated as 'F'. For example, F1 refers to Fabric 1. Press in the direction of arrows.

Corner Units

Gather the F1-A squares, F2 B squares and the F3-C squares.

Two-at-a-Time Half Square Triangles

1. Mark a diagonal line from corner to corner on the wrong side of a F1-A square.

2. Place two F1-A squares, RST (right sides together.) Sew 1/4" away from either side of the marked line. (fig. 1)

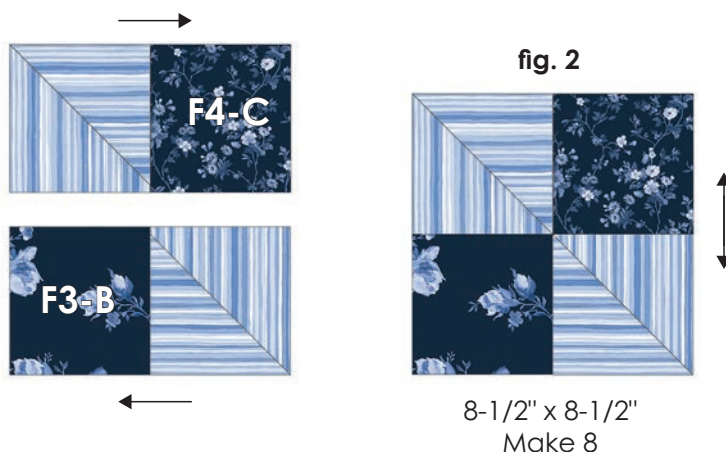
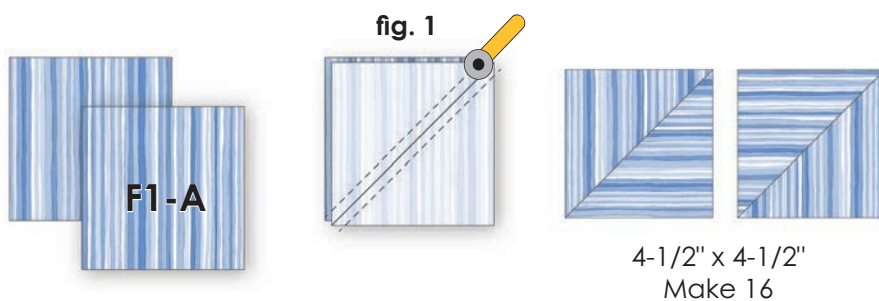
3. Trim on the marked line. Square up each unit to 4-1/2" x 4-1/2".

Repeat steps 1-3 with the remaining F1 squares to make 16 HST units.

4. Sew a HST unit to F4-C square. Press toward F4. Make 8.

5. Sew a HST unit to a F3-B square. Press toward F3. make 8.

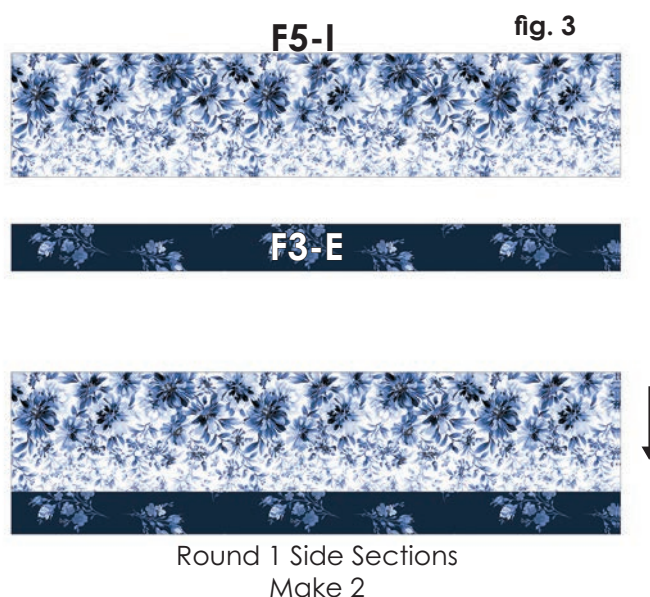
6. Sew the Step 4 unit to the Step 5 unit. Press open. (fig. 2) Make 8.

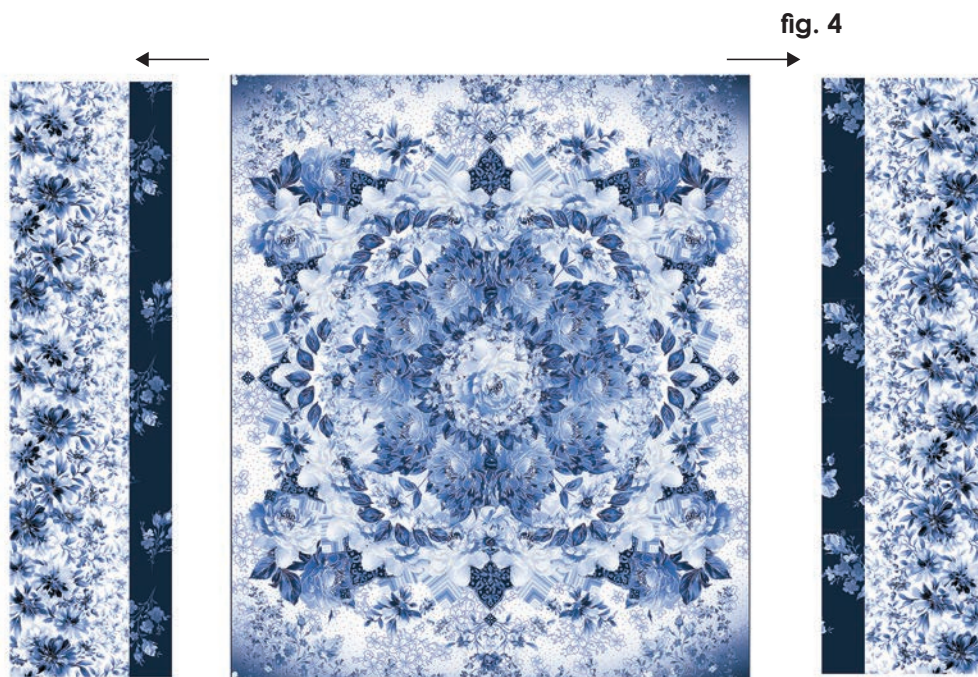


Round 1 Side Sections

7. Sew a F5-I strip to a F3-E strip. Press toward F3. (fig 3). Make 2

8. Sew the side sections to opposite sides of the F1-panel center. (fig. 4 - p. 5) Press away from the center.

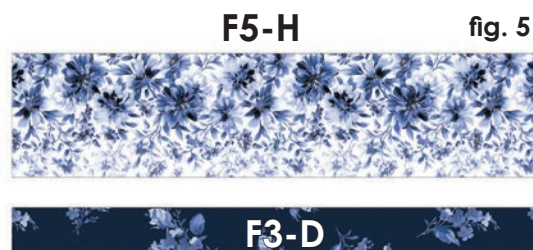




Round 1 Top and Bottom Sections

9. Sew a F5-H strip to a F3-D strip. Press toward F3. (fig. 5) Make 2.

10. Sew a corner unit to either side of the Step 9 section. Press towards center. (fig. 6) Make 2.



Finish Round 1

10. Sew the top and bottom sections to the quilt top center section. Press towards center. (fig. 7)



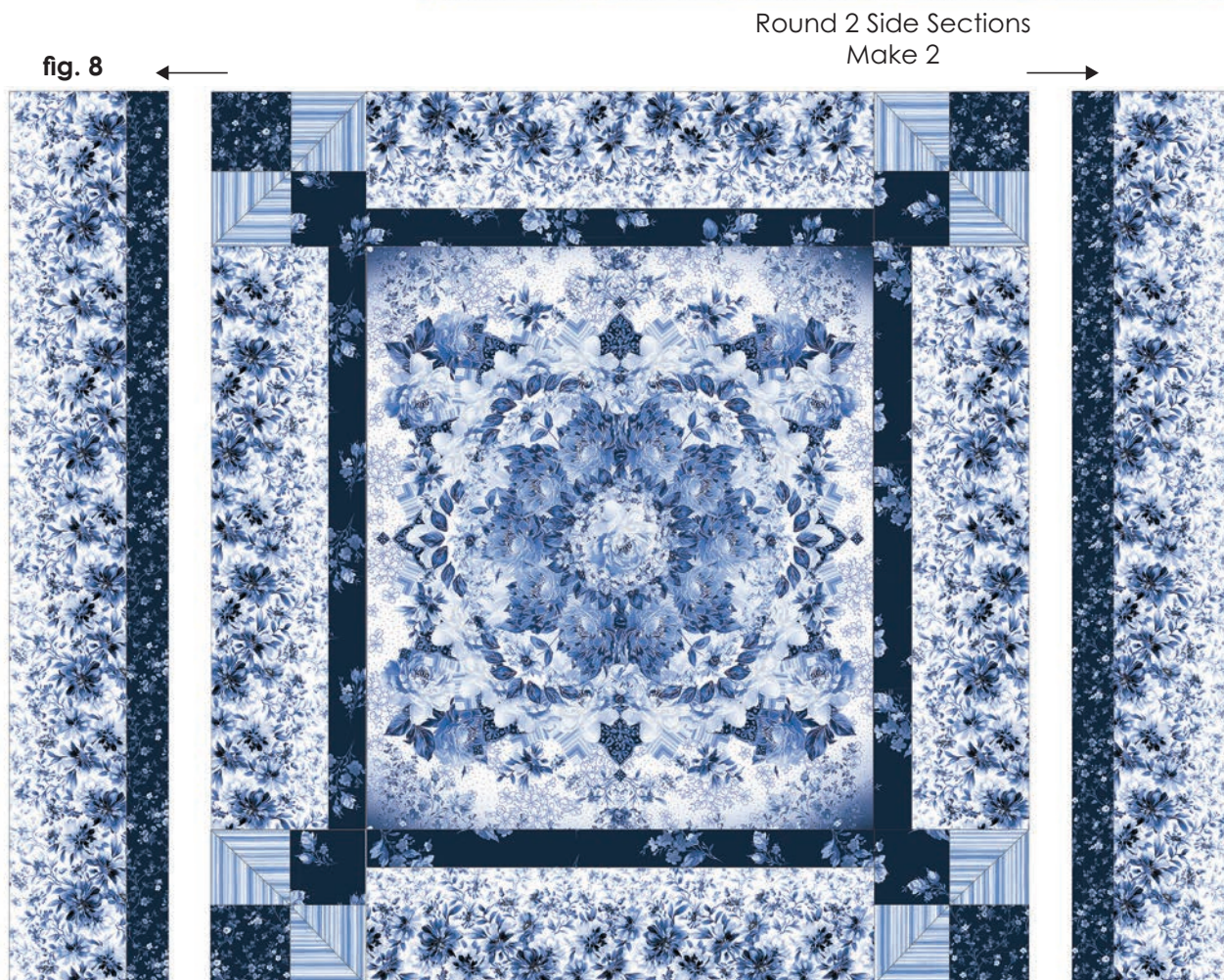
Top and Bottom Sections
Make 2



Round 2 Side Sections

11. Sew a F5-K strip to a F4-G strip. Press toward F4. Make 2

12. Sew the side sections to opposite sides of the quilt top. (fig. 8) Press away from center.

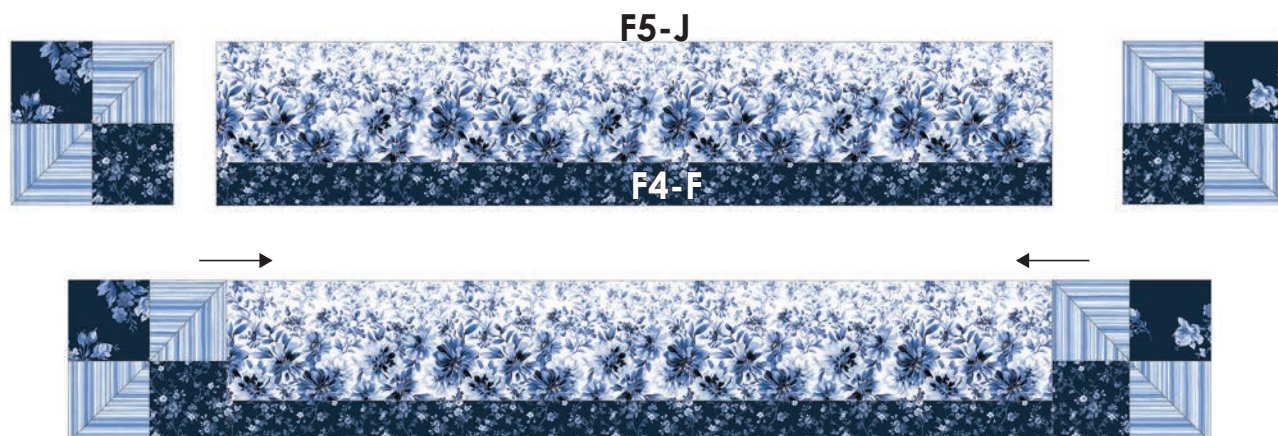


Round 2 Top and Bottom Sections

13. Sew a F5-J strip to a F4-F strip. Press toward F4. Make 2

14. Sew a corner unit to opposite sides of the Step 13 section. Press towards. Make 2.

15. Sew the top and bottom sections to the quilt top. Press away from the center. (see diagram on p.7)



Borders

16. Sew the F3-M strips to opposite sides of the quilt top. Press toward F3.
17. Sew the F3-L strips to the top and bottom of the quilt top. Press toward F3.



18. Layer the backing (wrong side up), batting and quilt top (right side up). Baste layers to secure. Quilt as desired. Trim the excess backing and batting.

19. Sew the binding strips together into one continuous strip. Press in half length-wise. Sew the binding to the quilt top with a 3/8" seam allowance, mitering the corners. Turn the binding to the back side of the quilt and stitch down by hand with matching thread.

Silver Jubilee Quilt Planning Diagram

