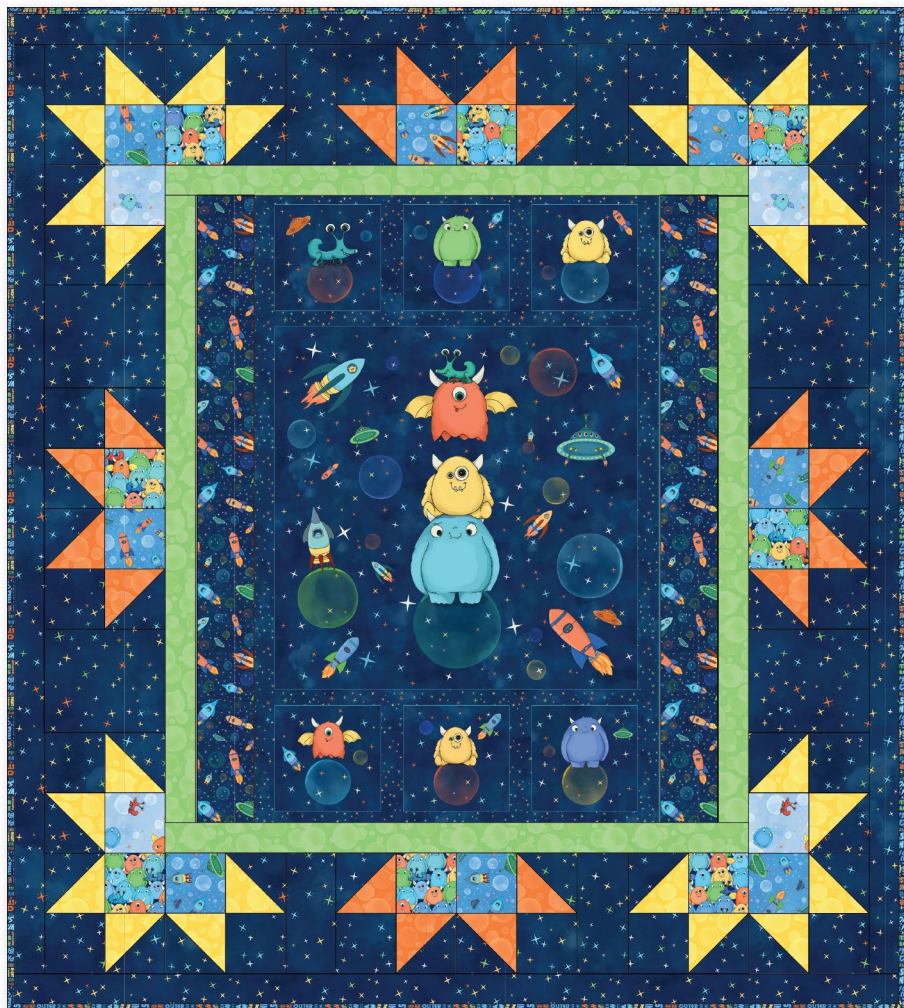


MAYWOOD  STUDIO

SPACE MONSTERS PANEL QUILT

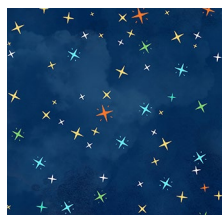


Space Monsters Panel Quilt

Featuring the Space Monsters fabric collection from Maywood Studio

59" x 66"

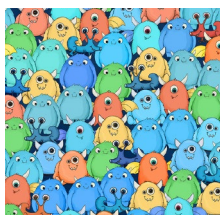
maywoodstudio.com



Fabric 1
MAS10926-NZ



Fabric 2
MAS10923-B



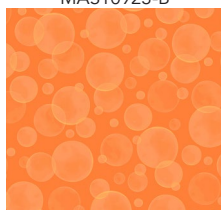
Fabric 3
MAS10921-NZ



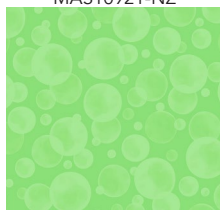
Fabric 4
MAS10922-B



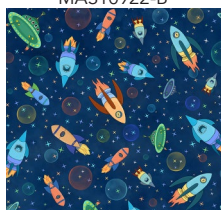
Fabric 5
MAS10925-S



Fabric 6
MAS10925-O



Fabric 7
MAS10925-G



Fabric 8
MAS10922-NZ



Fabric 9
MAS10924-NZ



Panel
MAS10920-NZ

MAYWOOD  STUDIO

Maywood Studio makes every effort to make sure our patterns are accurate.
Check for updates at maywoodstudio.com/projects

Fabric Requirements		
Fabric 1	MAS10926-NZ	1-1/2 yards
Fabric 2	MAS10923-B	Fat Quarter
Fabric 3	MAS10921-NZ	Fat Quarter
Fabric 4	MAS10922-B	Fat Quarter
Fabric 5	MAS10925-S	Fat Quarter
Fabric 6	MAS10925-O	Fat Quarter
Fabric 7	MAS10925-G	1/3 yard
Fabric 8	MAS10922-NZ	1/3 yard
Fabric 9	MAS10924-NZ Binding	1/2 yard
Panel	MAS10920-NZ	1 panel
*Backing	10960-B	4 yards

Cutting
Finished: 59" x 66"
Panel Fussy cut panel to measure 27" x 42"
Fabric 1 A (20) 4-1/2" squares B (20) 5" squares C (4) 7-1/4" x 8-1/2" rectangles D (4) 3-3/4" x 8-1/2" rectangles Cut (6) 2-1/2" x WOF strips. Sew end to end and cut into: (2) 2-1/2" x 59" side borders (2) 2-1/2" x 62" top/bottom borders
Fabric 2 E (4) 4-1/2" squares
Fabrics 3 and 4 F (8) 4-1/2" squares
Fabric 5 G (12) 5" squares
Fabric 6 H (8) 5" squares
Fabric 7 (2) 2-1/2" x 42" inner side borders (2) 2-1/2" x 39" inner top and bottom borders
Fabric 8 (2) 4-1/2" x 42" panel borders
Fabric 9 - Binding (7) 2-1/2" x WOF strips

WOF - Width of Fabric
 LOF - Length of Fabric
 RST - Right Sides Together
 HST - Half Square Triangle

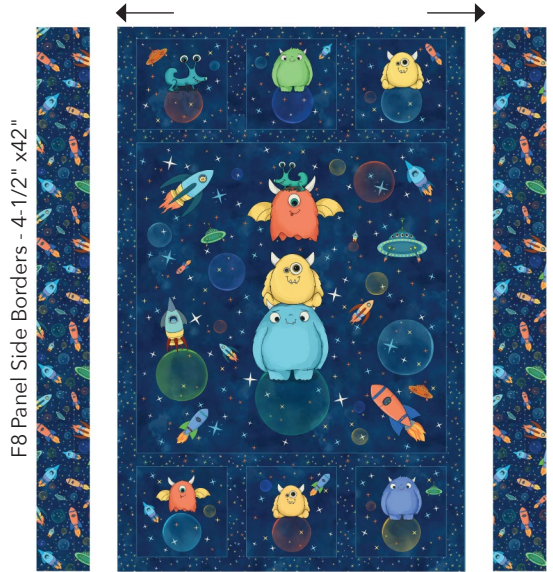
Space Monsters Panel Quilt Instructions

Please read all instructions before you begin. Seam allowance is 1/4".
Fabric is abbreviated as 'F' and by number. For example, Fabric 1 is 'F1'.

Panel

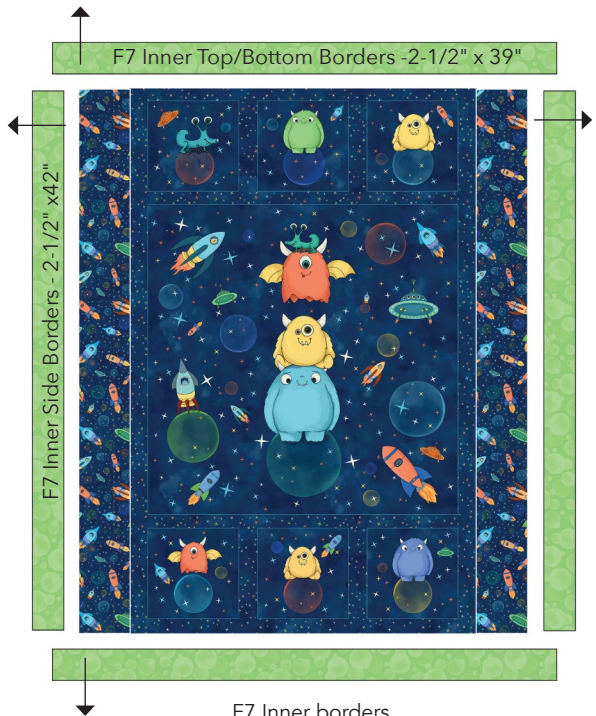
Tip: Pin the borders to the panels starting at the center and pinning out to the edge.

1. Fussy cut the panel to measure 27" x 42".
2. Sew the F8 panel side borders to the sides of the panel. Press toward F8.



F8 Panel side borders

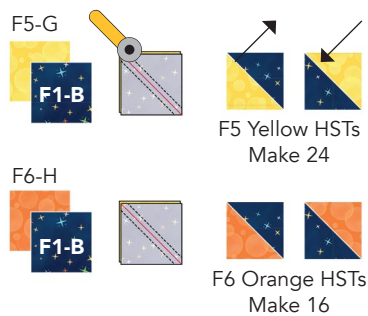
3. Sew the F7 inner side borders to the step 2 section. Press toward F7.
4. Sew the F7 inner top and bottom borders to the step 3 section. Press toward F7.



F7 Inner borders

Half Square Triangles (HST)

- 1. Draw a diagonal line from corner to corner on the wrong side of (20) F1-B squares.
- 2. Place an F1-B square RST, over an F5-G square. Sew 1/4" away from either side of the marked line.
- 3. Cut on the marked line. Press toward F1. Trim both pieces to 4-1/2" square. Make 12 pairs for a total of 24.
- 4. Repeat steps 2-3 to make F1/F6 Orange HSTs. Make 8 pairs for a total of 16.



Partial Star Blocks

- 1. Lay the pieces out as illustrated to the right. Sew into rows. Sew row to row. Press in the direction of the arrows. Make 4 of each block:

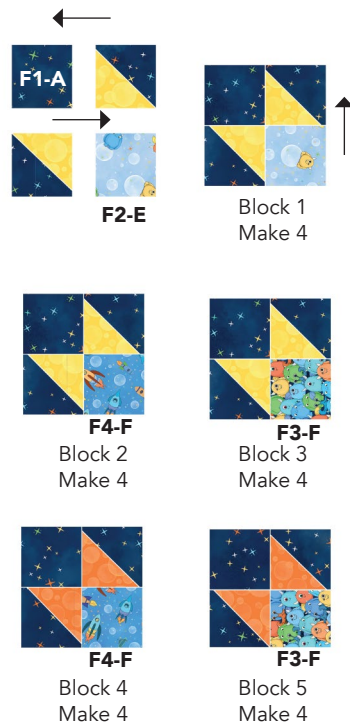
Block 1: F1-A, Yellow HSTs, F2-E

Block 2: F1-A, Yellow HSTs, F4-F

Block 3: F1-A, Yellow HSTs, F3-F

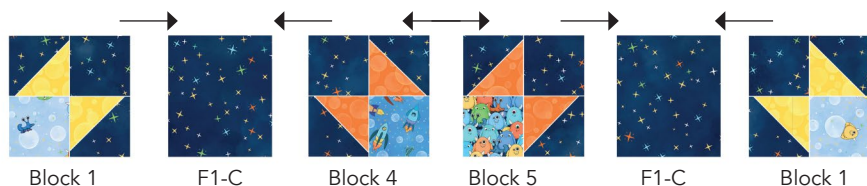
Block 4: F1-A, Orange HSTs, F4-F

Block 5: F1-A, Orange HSTs, F3-F



Partial Star Side Borders

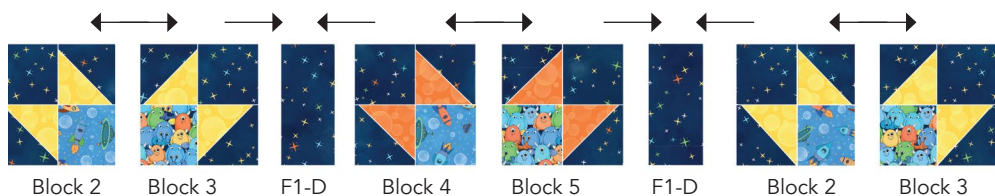
Lay the side rows out as illustrated below. Sew together and press as indicated. Make 2.



Make 2

Partial Star Top and Bottom Borders

Lay the top and bottom rows out as illustrated below. Sew together and press as indicated. Make 2.



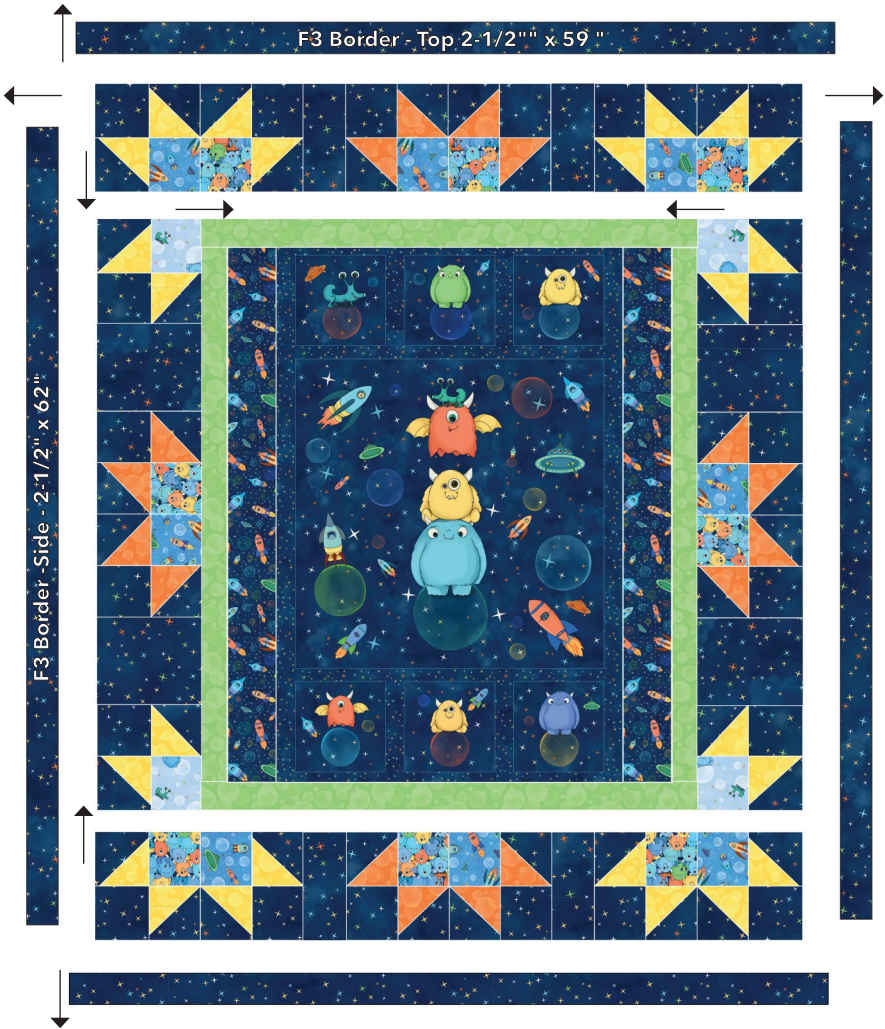
Make 2

Sew the Borders

Tip: Pin the borders to the quilt top starting at the center and pinning out to the edge.

1. Sew the partial star side borders to the left and right sides of the quilt top. Press toward the inner border. Pay attention to the orientation of the star points.
2. Sew the partial star top and bottom borders to the quilt top. Press toward the inner border. Pay attention to the orientation of the star points.
3. Sew the F3 side borders to the sides of the quilt top. Press toward the F3 border.
4. Sew the F3 top/bottom outer borders to the top/bottom of the quilt top. Press toward the F3 border.

Quilt Top Assembly Diagram



Finishing

1. Layer the backing (wrong side up), batting and quilt top (right side up). Baste layers to secure. Quilt as desired. Trim the excess backing and batting.
2. Sew the binding strips together into one continuous strip. Press in half length-wise. Sew the binding to the quilt top with a 1/4" seam allowance. Turn the binding to the back side of the quilt and stitch down by hand with matching thread.

Quilt Planning Diagram

Use this template to plan your project

