

MAYWOOD  STUDIO

Turtle Bay Quilt



Featuring the Turtle Bay collection by Maywood Studio

70" x 80" Finished Size

#madewithmaywood
maywoodstudio.com



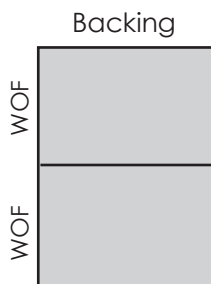


Finished Size 70" x 80"

Fabric Requirements

Fabric 1	MAS9530-N	5/8
Fabric 2	MAS9527-N	5/8
Fabric 3	MAS9528-N	5/8
Fabric 4	MAS9524-G	5/8
Fabric 5	MAS9528-Q	5/8
Fabric 6	MAS9524-N	5/8
Fabric 7	MAS9523-N	3/4
Fabric 8	MAS9526-T	2-3/4 yard
Binding	MAS9529-N	2/3 yard
Backing	your choice	5

WOF - Width of Fabric
RST - Right Sides Together
HST - Half Square Triangle

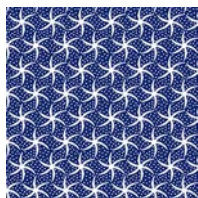


Cutting

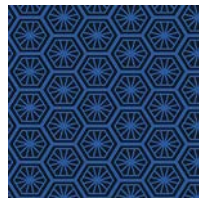
Fabric 1	A - Cut (3) 6-1/2" x WOF strips Subcut (17) 6-1/2" squares
Fabric 2	B - Cut (3) 6-1/2" x WOF strips Subcut (18) 6-1/2" squares
Fabric 3	C - Cut (3) 6-1/2" x WOF strips Subcut (14) 6-1/2" squares
Fabric 4	D - Cut (3) 6-1/2" x WOF strips Subcut (15) 6-1/2" squares
Fabric 5	E - Cut (3) 6-1/2" x WOF strips Subcut (16) 6-1/2" squares
Fabric 6	F - Cut (3) 6-1/2" x WOF strips Subcut (16) 6-1/2" squares
Fabric 7	G - Cut (4) 6-1/2" x WOF strips Subcut (24) 6-1/2" squares
Fabric 8	H - Cut (17) 2-1/2" x WOF strips Subcut (264) 2-1/2" squares Sashing: Cut (9) 2-1/2" x 24-1/2" strips Borders: Cut (8) 2-1/2" x WOF strips Cut (4) 2-1/2" x WOF strips
Binding	Cut (8) 2-1/2" x WOF strips
Backing	For non-directional fabric, cut lengthwise into (2) equal pieces and sew together.



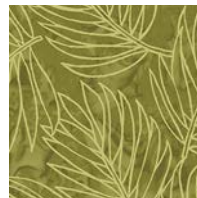
Fabric 1
MAS9530-N



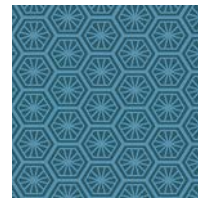
Fabric 2
MAS9527-N



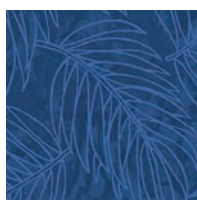
Fabric 3
MAS9528-N



Fabric 4
MAS9524-G



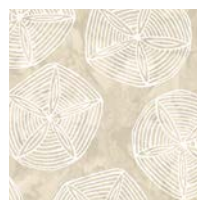
Fabric 5
MAS9528-Q



Fabric 6
MAS9524-N



Fabric 7
MAS9523-N



Fabric 8
MAS9526-T



Binding
MAS9529-N

Turtle Bay Quilt – by Maywood Studio

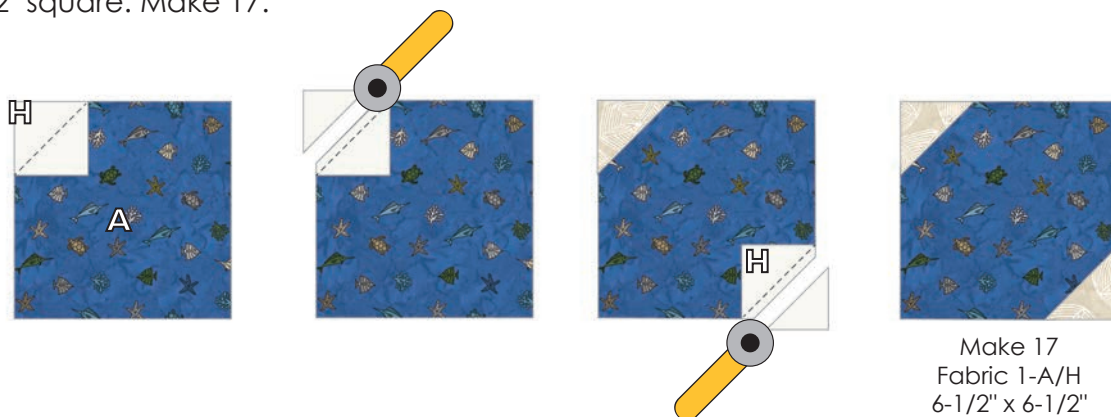
Please read all instructions before you begin. Seam allowance is 1/4" unless otherwise stated. Use a light sizing/starch on the squares before cutting triangles to help control stretching along the bias edges.

Follow pressing arrows to nest seams, otherwise, press all seams open.

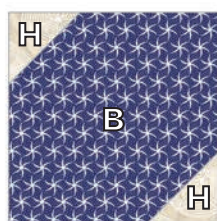
Unit Assembly

Make the cut-away corner units

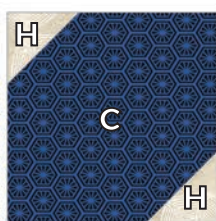
1. Mark a diagonal line from corner to corner on the wrong side of a (Fabric 8) H square. Place RST over a (Fabric 1) A square. Sew on the marked line. Trim 1/4" away from the marked line. Press gently toward the center. You will repress some units to nest your seams when assembling the blocks and the quilt top. Trim to 6-1/2" square. Make 17.



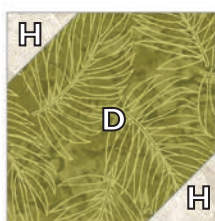
2. Repeat step 1 to make the following units:



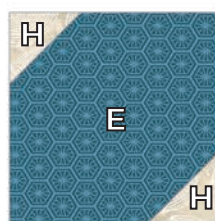
Make 18
Fabric 2-B/H
6-1/2" x 6-1/2"



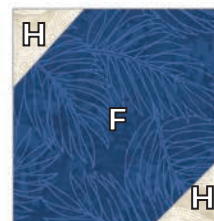
Make 14
Fabric 3-C/H
6-1/2" x 6-1/2"



Make 15
Fabric 4-D/H
6-1/2" x 6-1/2"

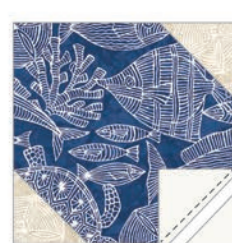
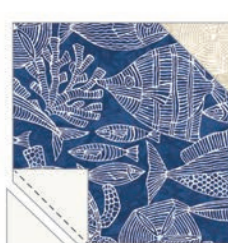


Make 16
Fabric 5-E/H
6-1/2" x 6-1/2"

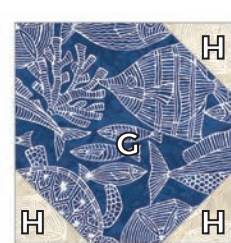


Make 16
Fabric 6-F/H
6-1/2" x 6-1/2"

3. Select a (Fabric 7) G square. Repeat step 1 using the opposite corners as illustrated below. Add a 3rd (Fabric 8) H square to the bottom corner (fig. 1) so three sides have cut-away corners.



(fig. 1)



Make 24
Fabric 7-G/H
6-1/2" x 6-1/2"

4. Make the following sets as illustrated. There will be several left over units that you will use later. To nest seams, press in the direction of arrows. Gently press center seams. You will repress to nest later.

Set 1

Make 7
Fabric 6-F/H
*there will be two left over
6-1/2" x 12-1/2"

Set 2

Make 8
Fabric 5-E/H
6-1/2" x 12-1/2"

Set 3

Make 8
Fabric 2-B/H
*there will be two left over
6-1/2" x 12-1/2"

Set 4

Make 12
Fabric 7-G/H
6-1/2" x 12-1/2"

Set 5

Make 7
Fabric 4-D/H
*there will be one left over
6-1/2" x 12-1/2"

Set 6

Make 7
Fabric 3-C/H
6-1/2" x 12-1/2"

Set 7

Make 8
Fabric 1-A/H
*there will be one left over
6-1/2" x 12-1/2"

Block Assembly

5. Sew two Set 4 units together as illustrated. Press open. Make 6.

Set 4

Center Block

Make 6
12-1/2" x 12-1/2"

6. Sew a Set 2 unit to one side of a Step 5 center block. Sew a Set 6 unit to the opposite side. Press open. Make 6.

Set 2


Center Block Section

Set 6

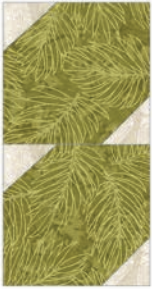
Make 6
12-1/2" x 24-1/2"

7. Sew the following sets and units together to make the side units. Press open.

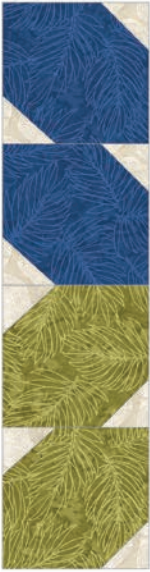
Set 1



Set 5




Side A

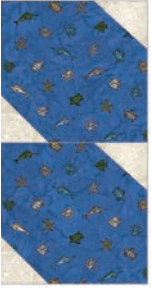


Make 7
6-1/2" x 24-1/2"
Use 6 for step 8.
Reserve 1.


Set 3



Set 1



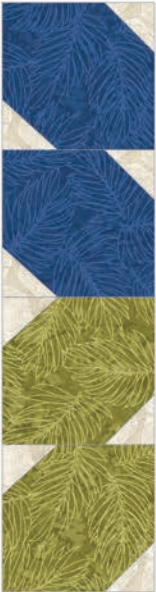
Side B




Make 8
6-1/2" x 24-1/2"
Use 6 for step 8.
Reserve 2.

8. Sew Side A to the Center Block Section. Sew Side B on the opposite side. Press Open. Make 6.


Side A




Center Block Section



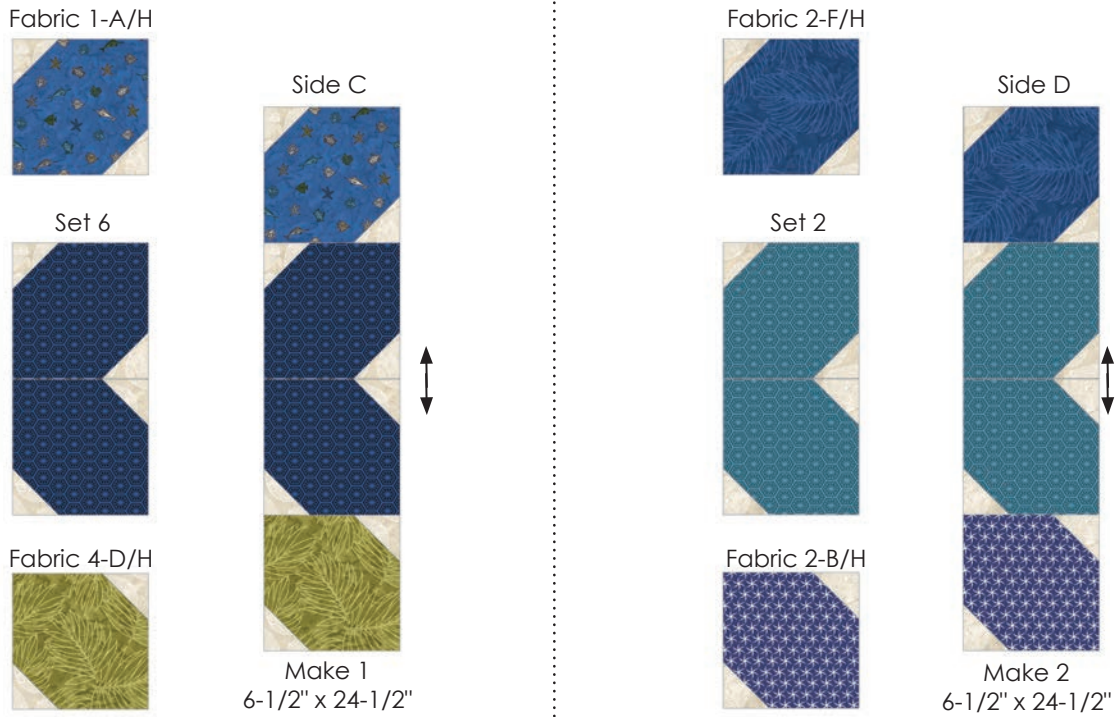
Side B





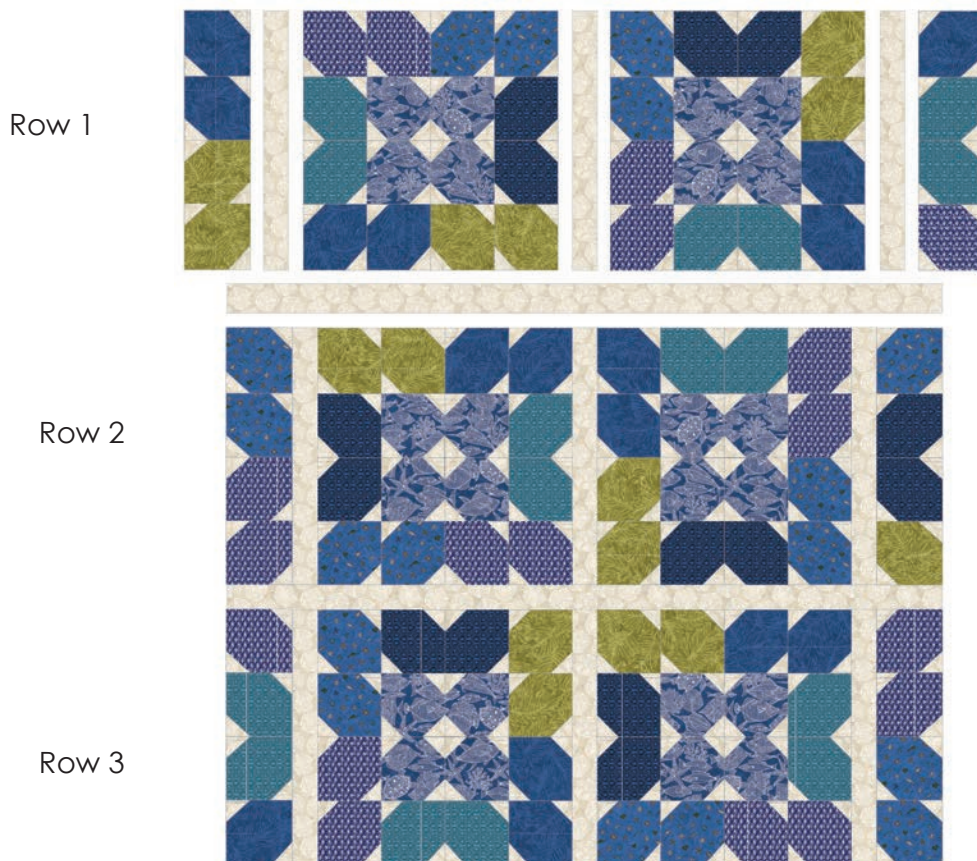
Make 6
24-1/2" x 24-1/2"

9. Sew the following sets and units together to make the remaining side units. Press open.



10. Arrange the blocks and remaining side units, rotating them to match the illustration below. Sew the blocks into rows, adding the (Fabric 8) 2-1/2" x 24" sashing strips between the blocks and side units. Press toward sashing.

11. Horizontal Sashing: Stitch 4 (Fabric 8) 2-1/2" x WOF strips end to end to make 2 horizontal sashing strips. Measure the width of the quilt through the middle: _____. Cut the strips to this length. Sew the horizontal sashing to Row 1 and Row 2 then sew the rows together.



11. Side Borders: Measure the length of the quilt through the middle: _____
Piece and trim two (Fabric 1) border strips to this length. Sew to the sides of the quilt. Press.

12. Top and Bottom Borders: Measure the width of the quilt through the middle: _____
Piece and trim two (Fabric 1) border strips to this width. Sew to the top and bottom of the quilt. Press.



13. Layer the backing (wrong side up), batting and quilt top (right side up). Baste layers to secure. Quilt as desired. Trim the excess backing and batting.

14. Sew the binding strips together into one continuous strip. Press in half length-wise. Sew the binding to the quilt top with a 3/8" seam allowance, mitering the corners. Turn the binding to the back side of the quilt and stitch down by hand with matching thread.

Plan Your Top!

